

2015

 TOMAX
USA.COM

table of contents

BUDGET INDEX

3 - 5 Budget Index

TECH ITEMS

6 - 14 Adapters + Chargers

15 - 29 Power Bank

30 - 36 Music + Earphone

37 - 39 Music + Bluetooth

40 - 41 Mouse

42 - 49 USB Flash Drives

STYLUS

50 - 65 Stylus

FLASHLIGHTS

66 - 71 Flashlights

DRINKWARE

72 - 83 Drinkware

GIFT SETS

84 - 85 Mouse Sets

86 Adapter Sets

87 - 90 Power Bank Sets

91 - 92 Music Sets

93 Stylus Sets

CRYSTAL

94 - 95 Crystal

PRODUCT INDEX

96 - 97 Product Index

INFORMATION

98 - 99 Information

budget index

UNDER \$1.49

KL7020	71	SP8794	64
KL7516	71	SP8812	63
SP8524	57	SP8842	56
SP8525	60	SP8851	56
SP8533	61	SP8854	57
SP8553	59	SP8878	56
SP8554	58	SP8914	64
SP8556	61	SP8915	55
SP8746	63	SP8931	53
SP8791	65	SP8933	53



KL7516



SP8525

SP8553

\$1.50 ~\$4.99

FL7157	68	MU8028	75
FL7160	69	MU8029	75
FL7216	68	MU8030	77
GP8563	93	MU8034	78
KL7129	71	MU8051	77
KL7139	70	MU8056	79
KL7163	69	MU8090	78
KL7167	69	MU8097	80
KL7181	69	MU8098	81
KL7183	70	SP8822	64
KL7185	70	SP8870	54
MU8020	77	SP8901	54
MU8022	77	SP8916	52
MU8027	74	SP8981	62



SP8901

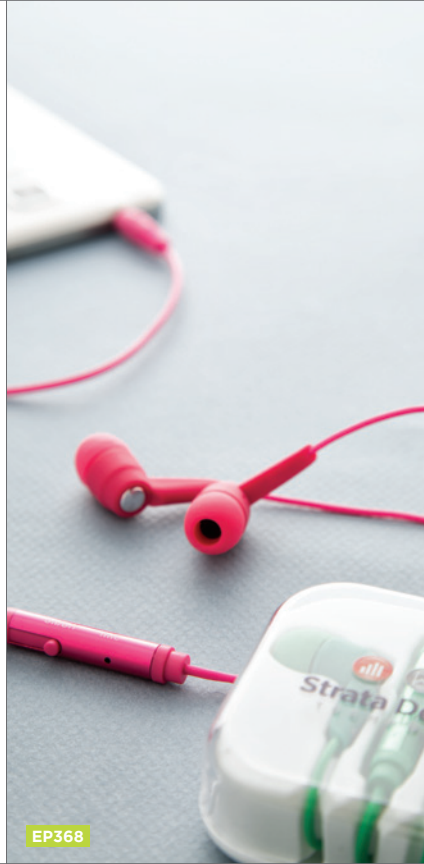


MU8097

MU8098

\$5.00~ \$9.99

AD300	8
AD3010	12
AD308	13
AD310	13
AD315	12
EP305	34
EP326	36
EP328	35
EP350	34
EP357	34
EP368	32
MS1819	40
MU8026	76
MU8045	78
MU8055	81
MU8538	82
MU8539	83
PC9101	28
PC9701	28



EP368



MU8539



AD315

\$10.00~ \$19.99

AD320	8
AD340	14
AD531	11
GB9129	84
GB9519	85
GP5459	91
GP6526	92
GP6586	92
HP352	36
MS1827	40
MS1829	41
PC3300	21
PC3589	21
PC9705	29
RS3113	38



AD340



PC3589



PC3300

\$20.00~ \$39.99

AD360	10
AD480	9
GB84	84
GP5481	91
GP5489	84
PC3291	19
PC3500	15
PC3520	23
PC3714	24
PC3800	20
PC3820	20
PC9245	27
PC9319	26
RS0633	39
RS3213	37
RS3518	37



\$40.00~ \$69.99

GB329	87	PC1837	18
		PC3000	25
		PC3104	16
GP1574	89	PC3200	17
GP15919	87	PC320K	22
GP3829	87	RS1602	38

ABOVE \$70.00

GB3739	90
GP3429	88



INTRODUCING

TECH

wall + car adapters

car adapters

wall adapters

power bank

earphone

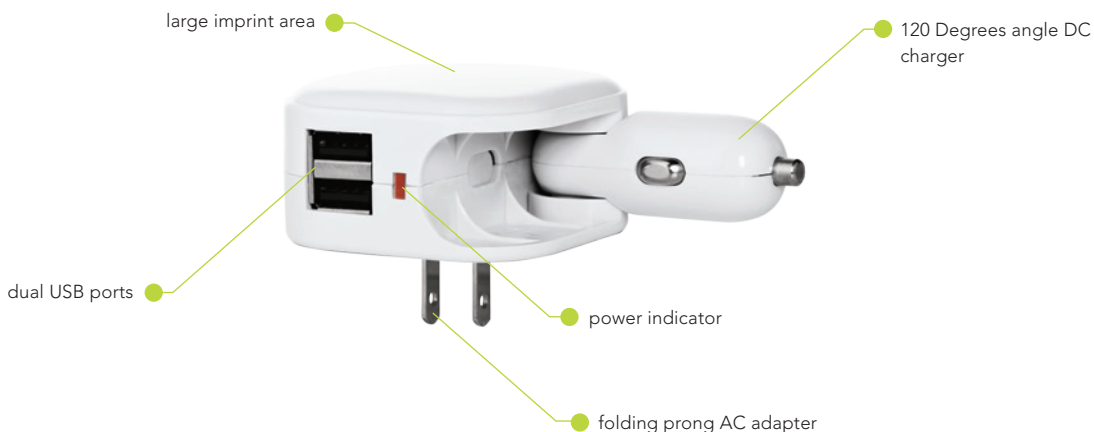
headset

bluetooth speaker

wireless mouse

usb flash drive

2 in 1 car + wall DC charger AC adapter w/ dual USB ports



AD300

UL listed AC(wall) / DC(car) 1 Amps power adapter with dual USB ports for iPhone and all smartphones
 Input: AC / 100 ~ 240V, DC / 12-24V
 Output: 5V / 1A
 Dimension: H 2 1/8 x W 2 1/8 x D 1 3/16"
 Imprint Sizes: H 1 5/8 x W 1 5/8"
 Weight: 200 pcs / 33 lbs

50	100	250	500 (4C)
\$11.50	\$10.50	\$9.90	\$9.50

Colors:

AD320 2 AMP

UL listed AC(wall) / DC(car) 2.1 Amps power adapter with dual USB ports for iPad, tablets and all smartphones
 Input: AC / 100 ~ 240V, DC / 12 ~ 24V
 Output: 5V / 2.1A
 Dimension: H 2 1/8 x W 2 1/8 x D 1 3/16"
 Imprint Sizes: H 1 5/8 x W 1 5/8"
 Weight: 200 pcs / 36.5 lbs

50	100	250	500 (4C)
\$15.90	\$14.90	\$14.50	\$13.90

Colors:

(Custom colors available)
 Full color logo: See page 99 for imprint info

There are many more Tech Items on our website.
 Visit www.TomaxUSA.com
 for our complete product line.

4.8A
 high speed
 adapter



AD480 NEW

Quality High Speed Charging Adapter (4.8A)
 UL Listed high output foldable AC(wall) /
 DC(car) charger, Intelligent dual USB ports
 (4.8A total output) deliver high speed
 charging to all latest gen devices. Charge two
 tablets or devices simultaneously at full speed!
 AC input: 100 ~ 240V 0.6A, 50 ~60 Hz
 AC output1: 5V / 2.4A
 DC output2: 5V / 2.4A
 DC input: 12V ~ 24V
 Dimension: H 2 3/16 x W 2 5/8 x D 1 1/8"
 Imprint Sizes: H 1 1/2 x W 2"

Weight: 100 pcs / 23.1 lbs

25	50	100	250 (4C)
\$24.90	\$23.90	\$22.90	\$21.90



US Patent Pending



Optional Package:
 P42 \$2.00 G/pc
 Blank goods

Visit www.TomaxUSA.com for our complete product line and updated pricing (website pricing prevail). Price includes a one color/one position imprint. Set up charge \$55.00(G). Extra color/position imprint add \$55.00(G) set up, plus running charge of \$0.40(G) per piece. Gift box included. For additional or alternate imprint information, see page 99. Production Time: 5-7 days after final approval.

There are many more Tech Items on our website. Visit www.TomaxUSA.com for our complete product line.

international travel just made easier



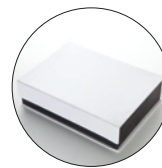
AD360

Multi-purpose Universal Adapter charger for US, UK, EU & AU with 2 output ports (1A & 2.1A), 2.1A AC port for faster charging with the detachable 1A DC car charging adapter. Dimension: H 3 x W 3 x D 1 1/8" (main unit) Imprint Size: H 1 x W 2" Weight: 50 pcs / 30 lbs

25	50	100	250 (4C)
\$29.50	\$27.90	\$26.90	\$25.90



Folding Prong AC Adapter



Optional Package: B29 \$3.00 G/pc Blank goods

Visit www.TomaxUSA.com for our complete product line and updated pricing (website pricing prevail). Price includes a one color/one position imprint. Set up charge \$55.00(G). Extra color/position imprint add \$55.00(G) set up, plus running charge of \$0.40(G) per piece. Gift box included. For additional or alternate imprint information, see page 99. Production Time: 5 - 7 days after final approval.



AD531 NEW

UL listed 3.1 A Dual Port USB (1A & 2.1A) Foldable Portable
 Rapid Travel Charger for all phone and tablets
 Dimension: H 1 13/16 x W 1 3/4 x D 11/8"

Imprint Sizes: H 1 x W 1"

Weight: 200 pcs / 27.5 lbs

50	100	250	500 (4C)
\$13.90	\$12.90	\$12.50	\$11.90

Colors:



Optional Package:
 P42 \$2.00 G/pc
 Blank goods

Visit www.TomaxUSA.com for our complete product line and updated pricing (website pricing prevail). Price includes a one color/one position imprint. Set up charge \$55.00(G). Extra color/position imprint add \$55.00(G) set up, plus running charge of \$0.40(G) per piece. Gift box included. For additional or alternate imprint information, see page 99. Production Time: 5-7 days after final approval.

There are many more Tech Items on our website. Visit www.TomaxUSA.com for our complete product line.

AD315 NEW

Foldable and Rotatable 1A USB travel wall adapter with power indicator, compact size, Rotatable plug can charge your devices in the vertical or horizontal direction.

Dimension: H 2 x W 2 x D 5/8"

Imprint Size: H 3/4 x W 1"

Weight: 400 pcs / 31 lbs

50	100	250	500 (C)
\$7.50	\$6.50	\$5.90	\$5.50

Colors:



foldable
&
rotatable



AD3010

Mini foldable elegant Curved designed AC Wall Adapter, 1A USB output port

Dimension: 2 1/2 X 1 5/8 X 11/16"

Imprint Size: H 1 1/4 x W 1/2"

Weight: 200 pcs / 17 lbs

50	100	250	500 (C)
\$8.95	\$7.95	\$7.50	\$6.95

Colors:
(Custom colors available)



Optional Package:
P42 \$2.00 G/pc
Blank goods



Visit www.TomaxUSA.com for our complete product line and updated pricing (website pricing prevail). Price includes a one color/one position imprint. Set up charge \$55.00(G). Extra color/position imprint add \$55.00(G) set up, plus running charge of \$0.40(G) per piece. Gift box included. For additional or alternate imprint information, see page 99. Production Time: 5 - 7 days after final approval.

charging 2 devices at one time



AD310

Dual USB Port car charger works with iPads, iPhones, all smartphones & tablets, charges 2 devices at one time

Input: DC 12 - 24V / 800mAh

Output: 5V / 1A - 2A

Dimension: H 3 1/4" x W 1" x D 1"

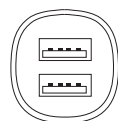
Imprint Sizes: H 1 1/4" x W 1/2"

Weight: 250 pcs / 21 lbs

50	100	250	500 (4C)
\$9.90	8.90	\$8.50	\$7.90

Colors:

(Custom colors available)



AD308

3.1 Amps DC Car Charger

Output: Total 3.1 Amps (2.1 Amps & 1 Amp)

Much faster charging time with 2.1 Amps

port (perfect for iPads & all tablets)

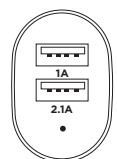
Dimension: H 3 1/4" x W 1 3/8" x D 1"

Imprint Size: H 1/2" x W 1/2"

Weight: 250 pcs / 21 lbs

50	100	250	500 (4C)
\$10.50	\$9.50	\$8.90	\$8.50

Colors:



There are many more Tech Items on our website.
Visit www.TomaxUSA.com
for our complete product line.

3 USB ports for more devices



AD340 NEW

Three USB Port 4.4 A Car Chargers,
Provides Maximum Power For 3 Devices
At Once

Input: 12-24V, Output: 5V/4.4A

Dimension: H 3 1/4 x W 1 3/8 x D 3/4" f

Imprint Size: H 1/2 x W 3/4"

Weight: 200 pcs / 14.5 lbs

50	100	250	500 (C)
\$12.90	\$11.90	\$11.50	\$10.90

Colors:



Visit www.TomaxUSA.com for our complete product line and updated pricing (website pricing prevail). Price includes a one color/one position imprint. Set up charge \$55.00(G). Extra color/position imprint add \$55.00(G) set up, plus running charge of \$0.40(G) per piece. Gift box included. For additional or alternate imprint information, see page 99. Production Time: 5 - 7 days after final approval.

charges
two devices
at once

PC3500 **NEW**

Slim metal casing lithium polymer power pack. 5000mAh battery, dual-output makes it convenient to charge two hand-held devices at once.

Dimension: H 4 3/4 x W 2 5/8 x D 3/8"

Imprint Sizes: H 2 x W 1 1/2"

Weight: 50 pcs / 21 lbs

25	50	100	250 (4C)
\$38.90	\$37.90	\$36.90	\$35.90



Optional Package:
B32 \$3.00 G/pc
Blank goods



Optional Package:
P15 \$6.00 G/pc
Blank goods

5000
mAh

dual ports
power bank
with flashing
SOS light



PC3104

High capacity lithium polymer battery power bank with LED flashlight & SOS blinks. Dual output ports works with iPads, iPhones, all Smartphones & Tablets, charges 2 devices at one time.

Input: 5 V/1A

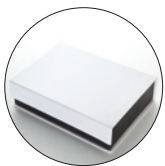
Dual USB Output: 5.3V/1A & 2A

Dimension: H 3 5/8 x W 3 1/8 x D 7/8"

Imprint Sizes: H 5/8 x W 1 3/4"

Weight: 50 pcs / 37.5 lbs

25	50	100	250 (4C)
\$54.90	\$53.90	\$52.90	\$51.90



Optional Package:
B29 \$3.00 G/pc
Blank goods

Visit www.TomaxUSA.com for our complete product line and updated pricing (website pricing prevail). Price includes a one color/one position imprint. Set up charge \$55.00(G). Extra color/position imprint add \$55.00(G) set up, plus running charge of \$0.40(G) per piece. Gift box included. For additional or alternate imprint information, see page 99. Production Time: 5 - 7 days after final approval.

powerful
 dual port
 power bank

PC3200

12000mAh Power Bank for iPad & Smartphones
 Slim casing with piano finish, high capacity lithium polymer battery power bank. Dual output ports works with iPads, iPhones, all Android phones, tablets & other electronic devices, charges 2 devices at one time.

Dimension: H 6 x W 2 7/8 x D 5/8"

Imprint Sizes: H 2 x W 1 7/8"

Weight: 30 pcs / 21 lbs

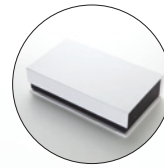
25	50	100	250 (4C)
\$48.90	\$47.90	\$46.90	\$45.90



Colors:  



Optional Package:
 P15 \$6.00 G/pc
 Blank goods



Optional Package:
 B32 \$3.00 G/pc
 Blank goods



4 LED
 indicators



12000
 mAh

There are many more Tech Items on our website.
 Visit www.TomaxUSA.com
 for our complete product line.

high efficiency solar cells

absorbs broader wave range and
 produces more energy than the
 conventional solar cells



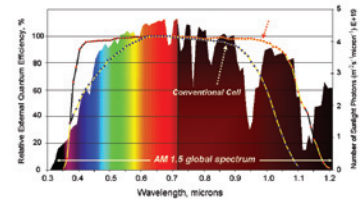
PC1837

Hi-e Solar Powerbank
 6000mAh Li-ion battery with High efficiency solar panel,
 Charges all smartphones / iphones / ipad / tablets
 Micro input: 5V / 1A
 USB output: 5V / 2.1A
 LED indicators for power level, reverse current protection
 to prevent battery from being discharged
 Dimension: H3 1/8 x W 5 x D 5/8"
 Imprint Sizes: H 2 x W 2" (Backside)
 Weight: 18 pcs / 11 lbs

25	50	100	250 (4C)
\$52.90	\$51.90	\$50.90	\$49.90



6000
mAh



Visit www.TomaxUSA.com for our complete product line and updated pricing (website pricing prevail). Price includes a one color/one position imprint. Set up charge \$55.00(G). Extra color/position imprint add \$55.00(G) set up, plus running charge of \$0.40(G) per piece. Gift box included. For additional or alternate imprint information, see page 99. Production Time: 5 - 7 days after final approval.

There are many more Tech Items on our website.
 Visit www.TomaxUSA.com
 for our complete product line.



PC3291  

Quality glossy finish, sleek design power bank charges iPhones, Android phones, & MP3/4. 2900mAh Li-Ion rechargeable battery with LED flash light and power indicator.

Built-in input & output micro USB port with additional USB output port to charge your second electronic device.

Capacity: 2900 mAh

Output: 5V/0.6-1A, Input: 5V/1A

Dimension: H 4 3/16 x W 2 1/4 x D 7/16"

Imprint Size: H 2 1/2 x W 1 1/2"

Weight : 50 pcs / 19 lbs

25	50	100	250 (4C)
\$30.90	\$29.90	\$29.50	\$28.90

Colors:  





Optional Package:
 B22 \$2.00 G/pc
 Blank goods



Available
 in Black

2900
 mAh

Power indicator 
 LED flash light 

Visit www.TomaxUSA.com for our complete product line and updated pricing (website pricing prevail). Price includes a one color/one position imprint. Set up charge \$55.00(G). Extra color/position imprint add \$55.00(G) set up, plus running charge of \$0.40(G) per piece. Gift box included. For additional or alternate imprint information, see page 99. Production Time: 5-7 days after final approval.

There are many more Tech Items on our website. Visit www.TomaxUSA.com for our complete product line.

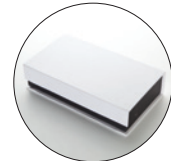


PC3820 NEW

New designer leather textured plastic casing with attached and pull out slim USB input/Micro output cable, also traditional USB output port and micro USB input port, Led power indicator on the side

Capacity: 8000mAh
 Input: 5V/1000mA & 5V/1000 mA
 Output: 5V/1A, 5V/2A
 Dimension: H 5 3/4 x W 2 7/8 x D 3/8"
 Imprint Size: H 2 x W 1 3/4"
 Weight: 100 pcs / 35.2 lbs

25	50	100	250 (4C)
\$42.90	\$41.90	\$40.90	\$39.90



Optional Package:
 P15 \$6.00 G/pc
 Blank goods

Optional Package:
 B32 \$3.00 G/pc
 Blank goods



PC3800 NEW

Faux leather textured plastic casing
 Designer dual ports high capacity li-ion power bank LED indicator
 Capacity :8000 mAh
 Input: 5V/1A,
 Output: 1A & 2.1 A,
 Dimension: H 5 1/4 x W 2 13/16 x D 5/8"
 Imprint Sizes: H 2 x W 1 1/2"
 Weight: 30 pcs / 18 lbs

25	50	100	250 (4C)
\$39.90	\$38.90	\$37.90	\$36.90



Optional Package:
 P15 \$6.00 G/pc
 Blank goods

Optional Package:
 B32 \$3.00 G/pc
 Blank goods

visit www.TomaxUSA.com for our complete product line and updated pricing (website pricing prevail). Price includes a one color/one position imprint. Set up charge \$55.00(G). Extra color/position imprint add \$55.00(G) set up, plus running charge of \$0.40(G) per piece. Gift box included. For additional or alternate imprint information, see page 99. Production Time: 5 - 7 days after final approval.

There are many more Tech Items on our website.
 Visit www.TomaxUSA.com
 for our complete product line.

PC3300 **NEW**

3,000mAh Li-ion battery with slim body design, charges cellphones and small electronic devices.

Micro input: 5V/1A,

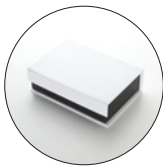
USB output: 5V/1A,

Dimension: H 3 13/16 x W 2 7/16 x D 3/8"

Imprint Size: H 2 x W 1 1/2"

Weight: 100 pcs / 23 lbs

25	50	100	250 (4C)
\$20.90	\$19.90	\$19.50	\$18.90



Optional Package:
 B22 \$2.00 G/pc
 Blank goods

PC3589 **NEW**

Dual port designer leather textured plastic casing power bank, 4 Volume Indicator.

Capacity: 5000mAh

Input: 5V/1000mA

Output: 5V/1000mA & 5V/2100 mA

Dimension: H 4 1/8 x W 2 3/4 x D 1/2"

Imprint Size: H 1 1/2 x W 1 1/2"

Weight : 50 pcs / 22 lbs

25	50	100	250 (4C)
\$22.90	\$21.90	\$20.90	\$19.90



Optional Package:
 P54 \$4.50 G/pc
 Blank goods



Visit www.TomaxUSA.com for our complete product line and updated pricing (website pricing prevail). Price includes a one color/one position imprint. Set up charge \$55.00(G). Extra color/position imprint add \$55.00(G) set up, plus running charge of \$0.40(G) per piece. Gift box included. For additional or alternate imprint information, see page 99. Production Time: 5-7 days after final approval.

There are many more Tech Items on our website. Visit www.TomaxUSA.com for our complete product line.

powerful
20,000
mAh

20,000
mAh



PC320K NEW

High capacity tablet size external power bank, with a Built-in LED backlit LCD indicator precisely shows accurate battery level. Designer Faux leather textured plastic casing.

Capacity: 20,000mAh

Input: 5V/1A

Output: 5V/1A, 5V/2A

Dimension: H 7 1/4 x W 4 5/16 x D 1/2"

Imprint Size: H 2 x W 2"

Weight: 23 pcs / 24.2 lbs

25	50	100	250 (4C)
\$54.90	\$52.90	\$51.90	\$49.90

Colors:



Visit www.TomaxUSA.com for our complete product line and updated pricing (website pricing prevail). Price includes a one color/one position imprint. Set up charge \$55.00(G). Extra color/position imprint add \$55.00(G) set up, plus running charge of \$0.40(G) per piece. Gift box included. For additional or alternate imprint information, see page 99. Production Time: 5 - 7 days after final approval.



direct charges
 without cable

PC3520 NEW

USB port 5V/2.1A External Battery Charger
 with built-in folding prong AC input
 plug direct charges USB without cable.

Bright LED flashlight

Capacity: 5200mAh

Input: AC100-240V

Output: 5V/2.1A

Dimension: H 4 7/16 x W 2 x D 1"

Imprint Size: H 1 x W 2"

Weight: 50 pcs / 20 lbs

25	50	100	250 (4C)
\$34.50	\$32.90	\$31.50	\$29.90

Colors:



Optional Package:
 P54 \$4.50 G/pc
 Blank goods



TECH

Power Bank

There are many more Tech Items on our website. Visit www.TomaxUSA.com for our complete product line.

PC3714 NEW

Designer Slim Metal Power Bank
 Quality Slim Metal casing, high capacity Lithium-Ion battery charger.
 2 output ports w/ LED flashlight,
 4 power indicators on the side.
 Capacity: 7000mAh
 Input: 5V/1000mA
 Output: 5V/1A, 5V/2A
 Dimension: H 5 11/16 x W 2 15/16 x D 3/8"
 Imprint Sizes: H 2 x W 1 3/4"
 Weight: 40 pcs / 20 lbs

25	50	100	250 (4C)
\$35.90	\$34.90	\$33.90	\$32.90

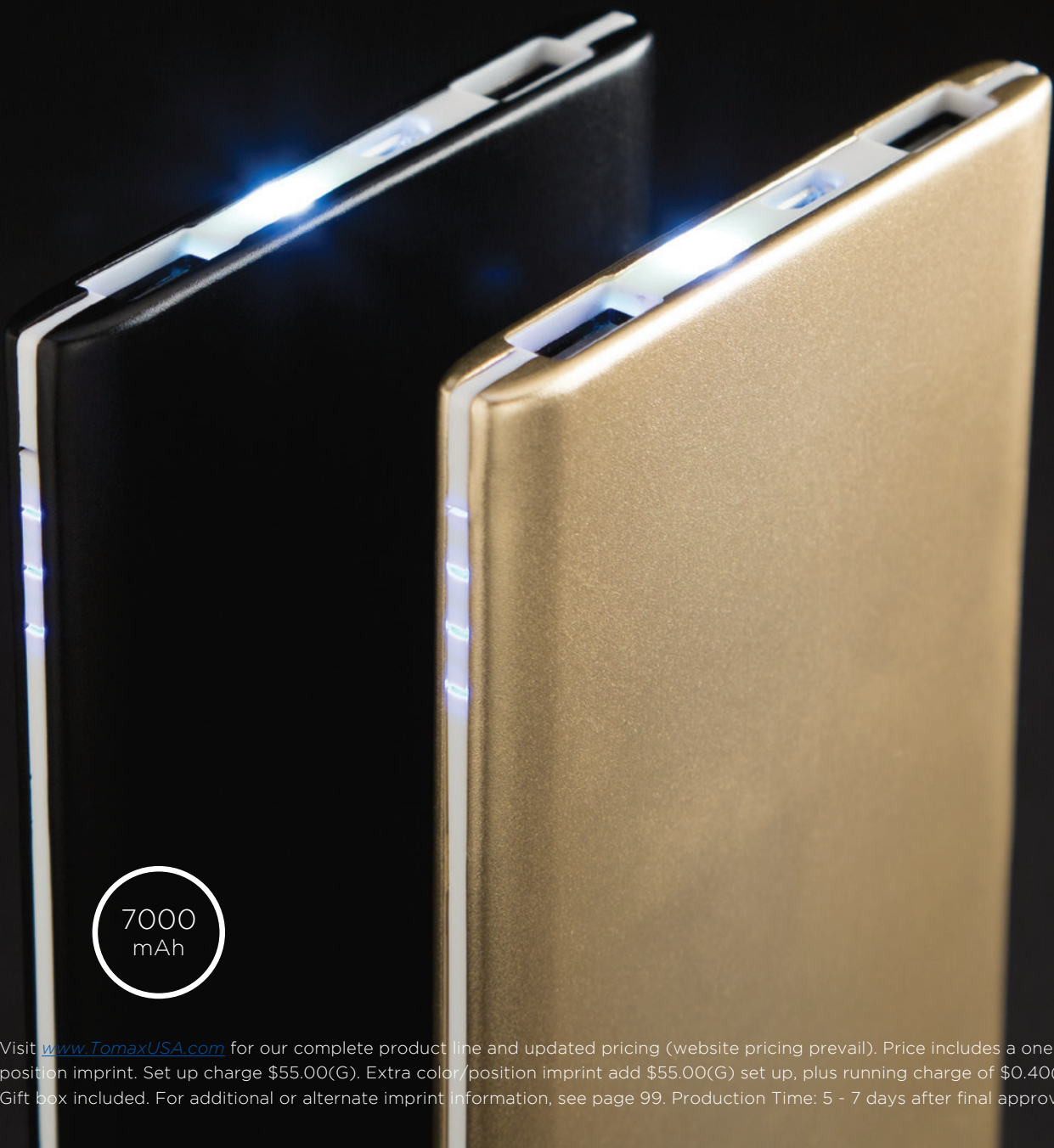
Colors:



Optional Package:
B32 \$3.00 G/pc
Blank goods



Optional Package:
P15 \$6.00 G/pc
Blank goods



7000
mAh

Visit www.TomaxUSA.com for our complete product line and updated pricing (website pricing prevail). Price includes a one color/one position imprint. Set up charge \$55.00(G). Extra color/position imprint add \$55.00(G) set up, plus running charge of \$0.40(G) per piece. Gift box included. For additional or alternate imprint information, see page 99. Production Time: 5 - 7 days after final approval.

There are many more Tech Items on our website.
Visit www.TomaxUSA.com
for our complete product line.

PC3000 NEW

High capacity Li-Ion battery charger with elegant curve designed smooth plastic casing
Dual USB output port and LED power indicator

Capacity: 12,500mAh

Input: 5V/1.5A

Output: 5V/1A, 5V/2A

Dimension: H 6 x W 2 3/8 x D 3/4"

Imprint Size: H 2 x W 1"

Weight: 30 pcs / 28.6 lbs

25	50	100	250 (4C)
\$48.90	\$47.90	\$46.90	\$45.90



Optional Package:
P15 \$6.00 G/pc
Blank goods



12500
mAh

Visit www.TomaxUSA.com for our complete product line and updated pricing (website pricing prevail). Price includes a one color/one position imprint. Set up charge \$55.00(G). Extra color/position imprint add \$55.00(G) set up, plus running charge of \$0.40(G) per piece. Gift box included. For additional or alternate imprint information, see page 99. Production Time: 5-7 days after final approval.

There are many more Tech Items on our website. Visit www.TomaxUSA.com for our complete product line.



4 power indicator LED light

7000 mAh

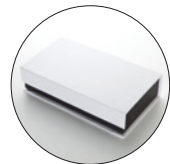
PC9319 NEW

High capacity Lithium-Ion battery charger with Aluminum Alloy Slim casing
 2 output ports (one on each side)
 Capacity: 7000mAh
 Input: 5V/1000mA
 Output: 5V/1A, 5V/2A
 Dimension: H 5 7/8 x W 2 15/16 x D 7/16"
 Imprint Size: H 2 1/2 x W 1 1/2"
 Weight: 50 pcs / 28 lbs

25	50	100	250 (4C)
\$35.90	\$34.90	\$33.90	\$32.90



Optional Package: P15 \$6.00 G/pc
Blank goods



Optional Package: B32 \$3.00 G/pc
Blank goods

Visit www.TomaxUSA.com for our complete product line and updated pricing (website pricing prevail). Price includes a one color/one position imprint. Set up charge \$55.00(G). Extra color/position imprint add \$55.00(G) set up, plus running charge of \$0.40(G) per piece. Gift box included. For additional or alternate imprint information, see page 99. Production Time: 5 - 7 days after final approval.

There are many more Tech Items on our website.
 Visit www.TomaxUSA.com
 for our complete product line.



PC9245 NEW

4 Power Indicators
 LED Flashlight
 Capacity: 5200mAh
 Input: 5V/1000mA
 Output: 5V/1000mA
 Dimension: H 3 3/4 x W 1 11/16 x D 7/8"
 Imprint: H 1/2 x W 1 1/2"
 Weight: 30 pcs / 11 lbs

25	50	100	250 (4C)
\$25.90	\$24.90	\$23.90	\$22.90



Optional Package:
 P54 \$4.50 G/pc
 Blank goods

Visit www.TomaxUSA.com for our complete product line and updated pricing (website pricing prevail). Price includes a one color/one position imprint. Set up charge \$55.00(G). Extra color/position imprint add \$55.00(G) set up, plus running charge of \$0.40(G) per piece. Gift box included. For additional or alternate imprint information, see page 99. Production Time: 5-7 days after final approval.

TECH

Power Bank

There are many more Tech Items on our website. Visit www.TomaxUSA.com for our complete product line.

PC9101

2200mAh Tubular Battery Charger


Small and stylish design fits easily into any bag or pocket. Charges and powers iPhones, all Android Smartphones & other electronic devices. Micro input (5V/1A) to power this battery charger. USB output (5V/1A) to charge your smartphone.

Dimension: H 3 3/8 x Dia 7/8"

Imprint: H 1/4 x W 1 1/2" (Laser engraving only)

Weight: 100 pcs / 23 lbs

50	100	250	500 (4C)
\$11.90	\$10.90	\$10.50	\$9.90

Colors: 



Optional Package:
B22 \$2.00 G/pc
Blank goods

PC9701

Rectangular shape potable battery charger

Capacity: 2200 mAh

Micro port input (5V/1)


USB port output (5V/1A)

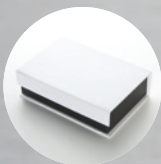
Dimension: H 2 3/4 x W 7/8 x D 7/8

Imprint Size: H 1/2 x W 2"

Weight: 100 pcs / 23 lbs

50	100	250	500(4C)
\$11.90	\$10.90	\$10.50	\$9.90

Colors: 



Optional Package:
B22 \$2.00 G/pc
Blank goods

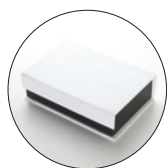
Visit www.TomaxUSA.com for our complete product line and updated pricing (website pricing prevail). Price includes a one color/one position imprint. Set up charge \$55.00(G). Extra color/position imprint add \$55.00(G) set up, plus running charge of \$0.40(G) per piece. Gift box included. For additional or alternate imprint information, see page 99. Production Time: 5 - 7 days after final approval.

PC9705

Rectangular shape Aluminum casing
 with on/off button
 Capacity: 2200mAh
 Input: 5V/500mA
 Output: 5V/1000mA
 Dimension: H 3 3/4 x W 13/16 x D 13/16"
 Imprint: H 1/2 x W 2"
 Weight: 50 pcs / 12 lbs

50	100	250	500 (4C)
\$12.90	\$11.90	\$11.50	\$10.90

Colors: 



Optional Package:
 B22 \$2.00 G/pc
 Blank goods



tech
 upgrade
 package
 option

P15



Large zipper pouch
 H 5 1/4 x W 7 1/2 x D 2"
 50 pcs / 16.1 lbs
 6.00 (G) Blank Goods

P54 NEW



Medium zipper pouch
 H 4 x W 5 x D 1 3/4"
 50 pcs / 10.5 lbs
 4.50 (G) Blank Goods

P42 NEW



Small zipper pouch
 H 2 3/4 x W 3 7/8 x D 1 3/8"
 100 pcs / 8.8 lbs
 2.00 (G) Blank Goods

B32



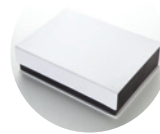
long deluxe gift box for
 large size power bank
 3.00 (G) Blank Goods

B22



Deluxe gift box for small
 power bank
 2.00 (G) Blank Goods

B29



delux gift box
 3.00 (G) Blank Goods

Visit www.TomaxUSA.com for our complete product line and updated pricing (website pricing prevail). Price includes a one color/one position imprint. Set up charge \$55.00(G). Extra color/position imprint add \$55.00(G) set up, plus running charge of \$0.40(G) per piece. Gift box included. For additional or alternate imprint information, see page 99. Production Time: 5-7 days after final approval.

There are many more Tech Items on our website.
 Visit www.TomaxUSA.com
 for our complete product line.



EP368 NEW

Phthalates Free
 High Quality 3.5mm Color Stereo ear-
 phone Jack, for iPhone/smartphones
 and MP3/4. Packed in clear plastic case.
 Dimension: 4 Feet in Length
 Clear Case: H 2 1/2" x W 2 1/2" x D 3/4"
 Imprint: H 1 1/2" x W 1 1/2" (on clear case)
 Weight: 300 pcs / 22 lbs

50	100	250	500 (4C)
\$9.90	\$8.90	\$8.50	\$7.95

Colors:

- Packed in clear plastic case
- Frequency Response: 20 Hz - 20 KHz
- Microphone: Condenser type
- Sensitivity: 98dB, 1V/Pa 52dB at 1KHz
- Cable 4 Feet in length

Visit www.TomaxUSA.com for our complete product line and updated pricing (website pricing prevail). Price includes a one color/one position imprint. Set up charge \$55.00(G). Extra color/position imprint add \$55.00(G) set up, plus running charge of \$0.40(G) per piece. Gift box included. For additional or alternate imprint information, see page 99. Production Time: 5 - 7 days after final approval.

new
macaron
colors

+

phthalates
free
earphone



There are many more Tech Items on our website. Visit www.TomaxUSA.com for our complete product line.



EP305

3.5mm earphone / microphone (Flat Wire)
 Dimension: 4 Feet in Length
 Imprint: H 1/4 x W 1/2"
 Weight: 500 pcs / 22 lbs

50	100	250	500 (4C)
\$8.50	\$7.50	\$6.50	\$5.95

Colors: (Custom colors available)



EP350

3.5mm Earphone/Microphone
 Dimension: 4 Feet in Length
 Imprint: H 1/8 x W 7/8"
 Weight: 500 pcs / 22 lbs

50	100	250	500 (4C)
\$8.50	\$7.50	\$6.50	\$5.95

Colors: (Custom colors available)



EP357

3.5mm Earphone/Microphone
 Dimension: 4 Feet in Length
 Imprint: H 1/8 x W 7/8"
 Weight: 500 pcs / 22 lbs

50	100	250	500 (4C)
\$8.90	\$7.90	\$7.50	\$6.95

Colors: (Custom colors available)



upgrade package option	P42 Small zipper pouch NEW
	H 2 3/4 x W 3 7/8 x D 1 3/8"
	100 pcs / 8.8 lbs 2.00 (G)

Visit www.TomaxUSA.com for our complete product line and updated pricing (website pricing prevail). Price includes a one color/one position imprint. Set up charge \$55.00(G). Extra color/position imprint add \$55.00(G) set up, plus running charge of \$0.40(G) per piece. Gift box included. For additional or alternate imprint information, see page 99. Production Time: 5 - 7 days after final approval.

EP328 NEW

Quality stereo Earphone w/never-tangled,
 zipper-closure cable
 New never-tangled earbud, Newly Designed
 Zipper closure cable
 2-in-1 3.5mm Headset Jack Stereo Headset with
 on/off Microphone and Volume Control
 For iPhone and Smartphones
 Ultra Soft In-Ear Silicone Tips Block Out Noise
 for Sound Isolation.

*Frequency response: 20 Hz 20 KHz,
 *Microphone: Condenser type,
 *Plug: 3.5 mm Stereo Plug,
 *Sensitivity: 98dB, 1V/Pa at 1KHz-52dB
 Dimension: 4 Feet in Length "
 Imprint: H 3/8 x W 1/4"
 Weight: 500 pcs / 25 lbs

50	100	250	500 (4C)
\$9.90	\$8.90	\$8.50	\$7.95

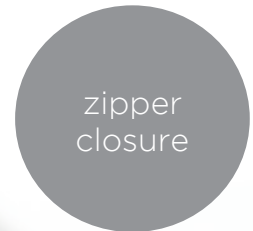
Colors:



*US Patent Pending



Optional Package:
 P42 \$2.00 G/pc
 Blank goods



Visit www.TomaxUSA.com for our complete product line and updated pricing (website pricing prevail). Price includes a one color/one position imprint. Set up charge \$55.00(G). Extra color/position imprint add \$55.00(G) set up, plus running charge of \$0.40(G) per piece. Gift box included. For additional or alternate imprint information, see page 99. Production Time: 5-7 days after final approval.

There are many more Tech Items on our website. Visit www.TomaxUSA.com for our complete product line.

EP326

Stereo ear bud with microphone
2-in-1 3.5mm Headset Jack Stereo Headset with on/off Microphone , for iPhone and Smartphones. Ultra Soft In-Ear Silicone Tips Block Out Noise for Sound Isolation.

*Frequency response: 20 Hz 20 KHz,
*Microphone: Condenser type,
*Plug: 3.5 mm Stereo Plug,
*Sensitivity: 98dB, 1V/Pa at 1KHz-52dB

Dimension: 4 Feet in Length
Imprint: H 3/8 x W 1/4"

Weight: 500 pcs / 22 lbs

50	100	250	500 (4C)
\$8.90	\$7.90	\$7.50	\$6.95

Colors:



HP352 NEW

Foldable stereo microphone headset premium quality, 3.5mm jack, stereo sound headset with mic, foldable for easy storage.

Cable 4 Feet in Length
Dimension: H 7 x W 7 1/2 x D 3"
Imprint: H 1 3/4 x W 1 3/4"
(one color only)

Weight: 20 pcs / 14 lbs

25	50	100	250 (4C)
\$18.50	\$17.90	\$17.50	\$16.95

Colors:
(Custom colors available)



Visit www.TomaxUSA.com for our complete product line and updated pricing (website pricing prevail). Price includes a one color/one position imprint. Set up charge \$55.00(G). Extra color/position imprint add \$55.00(G) set up, plus running charge of \$0.40(G) per piece. Gift box included. For additional or alternate imprint information, see page 99. Production Time: 5 - 7 days after final approval.

RS3518 NEW

Bluetooth profile: V2.1+EDR
 Bluetooth protocol: HFPV1.5,A2DPV1.2,AVRCPV1.0
 RF distance: 10M
 Frequency: 100HZ-18KHZ
 SNR: ≥85db
 Distortion: ≤0.5%
 Working voltage/current: 3.3 4.2V
 Charging voltage/current: DC 5V
 Battery capacity: 400mAh
 Playback time: About 3H
 Rated power: 3W
 Hands free call: Yes TF Card: Yes
 Material: ABS
 Dimension: H 2 1/4 x W 4 3/8 x D 1 7/16"
 Imprint Size: H3/4 x W 1 1/4"
 Weight: 50 pcs / 27.1 lbs

25	50	100	250 (4C)
\$24.90	\$23.90	\$22.90	\$21.90



RS3213

Aluminum alloy housing Bluetooth Speaker
 Output power: RMS 4W*1 THD=10%
 Frequency Response: 150-18KHZ
 Loud Speaker: 4Ω 3W*1
 Signal and noise ratio: ≥80dB
 Battery: Rechargeable li-ion 400mAH, 2hrs
 music playback
 Micro SD card slot
 Dimension: H 1 7/8 x 3" Dia
 Imprint Size: H 3/8 x W 1 1/4"
 Weight: 50 pcs / 33 lbs

25	50	100	250 (4C)
\$30.90	\$29.50	\$28.50	\$27.50



- 1) 3.5mm male jack cable, length: 50cm
- 2) USB power supply cable, length: 50cm
- 3) pass code: 0000



Visit www.TomaxUSA.com for our complete product line and updated pricing (website pricing prevail). Price includes a one color/one position imprint. Set up charge \$55.00(G). Extra color/position imprint add \$55.00(G) set up, plus running charge of \$0.40(G) per piece. Gift box included. For additional or alternate imprint information, see page 99. Production Time: 5-7 days after final approval.

There are many more Tech Items on our website.
 Visit www.TomaxUSA.com
 for our complete product line.



bluetooth speaker

RS1602

Bluetooth latest Version 4.0
 Support Bluetooth HFP A2DP AVRCP,HFP,HSP,
 Total Output Power: 3W*1
 Rechargeable battery capacity: 500mAh
 USB charge
 Standby time: 350 Hours
 Range: 10m
 Frequency: 85Hz to 20KHz, SNR ≥80dB33db
 Dimension: H 2 x W 3 x D 3"
 Imprint Size: H 3/4 x W 1 1/2"
 Weight : 20 pcs / 19 lbs
 25 50 100 250 (4C)
 \$54.90 \$53.50 \$52.90 \$51.90

Color:



RS3113

Salt & Pepper plastic housing bluetooth speaker
 Output power: RMS 4W*1 THD=10%
 Frequency Response: 150-18KHZ
 Loud Speaker: 4Ω 2W*1
 Signal and noise ratio: ≥80dB
 Battery: 200mAH rechargeable Li-ion battery,
 2hrs music playback
 Bass booth: No
 Support A2DP V1.2 AVRCP V1.4 profiles
 Dimension: H 2 x 1 11/16" Dia
 Imprint Size: H 1/2 x W 1"
 Weight : 100 pcs / 23.5 lbs
 25 50 100 250 (4C)
 \$17.90 \$16.90 \$16.50 \$15.90

Colors:

Visit www.TomaxUSA.com for our complete product line and updated pricing (website pricing prevail). Price includes a one color/one position imprint. Set up charge \$55.00(G). Extra color/position imprint add \$55.00(G) set up, plus running charge of \$0.40(G) per piece. Gift box included. For additional or alternate imprint information, see page 99. Production Time: 5 - 7 days after final approval.

RS0633 **NEW**

Bluetooth profile: V2.1+EDR
Bluetooth protocol:
HFPV1.5,A2DPV1.2,AVRCPV1.0
RF distance: 10M
Frequency: 100HZ-18KHZ
SNR: ≥85db
Distortion: ≤0.5%
Working voltage/current: 3.3 4.2V
Charging voltage/current: DC 5V
Battery capacity: 400mAh
Playback time: About 3H
Rated power: 3W
Hands free call: Yes TF Card: Yes
Material: Aluminum + ABS
Dimension: H 2 x Dia 2 5/16"
Imprint: H 11/16 x W 15/16"
Weight: 50 pcs / 38.5 lbs

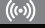
25	50	100	250 (4C)
\$23.90	\$22.90	\$22.50	\$21.90

Colors: 

colorful
bluetooth
speaker



There are many more Tech Items on our website. Visit www.TomaxUSA.com for our complete product line.

MS1827 

ABS material, ergonomic design with 10 feet working range

Frame 30 ips/sec,

Acceleration 150320g

Resolution :

800/1200/1600/2000/2400 CPI

Dimension: H 5 x W 2 7/8 x D 1 1/2"

Imprint: H 5/8 x W 7/8"

Weight: 100 pcs / 30 lbs

25	50	100	250 (4C)
\$16.90	\$15.90	\$15.50	\$14.95



wireless mouse

**MS1819** 

2.4Ghz Wireless optical mouse, Ergonomic smart design, nano receiver, plug and play.

Wireless 2.4G radio wave (range up to 30 feet)

Plug & play nano receiver (easy to use)

Auto sleep feature (energy saving)

PC & MAC compatible

AA battery included

3 CPI 1000/1500/2000 conversion (default at 1000)

Unit works on most desk surface except glass

Dimension: H 4 1/2 x W 2 7/8 x D 1 1/2"

Imprint: H 1/2 x W 1"

Weight: 100 pcs / 24 lbs

25	50	100	250 (4C)
\$10.90	\$10.50	\$9.90	\$9.50

Visit www.TomaxUSA.com for our complete product line and updated pricing (website pricing prevail). Price includes a one color/one position imprint. Set up charge \$55.00(G). Extra color/position imprint add \$55.00(G) set up, plus running charge of \$0.40(G) per piece. Gift box included. For additional or alternate imprint information, see page 99. Production Time: 5 - 7 days after final approval.

why is our foldable wireless mouse better?

We use only the best components for MS1829 to ensure Tomax quality standard. Ergonomic smart design for comfortable use. ABS plastic material. 2.4GHz Full-size optical wireless mouse that folds to compact travel size. 2 way transmission technology, operating range 30 feet. Top IC chip(A3000) & RF solutions(A4302) within wireless industry - a true 2-in-1 single chip Optical tracking DPI switch & indicator to change the speed (1000/15000/2000) for accuracy. Infrared sensor, super

strong to pass any rough surface on desk. Plug and Play Nano receiver fits into the body of mouse. Window PC, Mac compatible. 2 AAA alkaline batteries (included). Battery status indicator with boost feature for energy saving, low battery consumption. Both manual/auto shut down feature to save battery life. Use only the strong metal shaft for folding mechanism.



Custom colors available,
 minimum 500pcs,
 lead time: 6 weeks

MS1829

Full size wireless foldable optical mouse

Dimension: H 4 1/2 x W 2 1/4 x D 1 1/4"

Imprint: H 5/8 x W 1 1/2"

Weight: 100 pcs / 24 lbs

25	50	100	250 (4C)
\$14.90	\$13.90	\$13.50	\$12.95

Colors: 
 (Custom colors available)



There are many more Tech Items on our website.

Visit www.TomaxUSA.com for our complete product line.

TOMAX USB Flash Drive

- 2.0 Standard
- Data Upload + Auto Run available
- 1 year warranty
- Gift box included
- Password Protection available
- Free air freight to US 50 states



UB1629C

Colored aluminum case with swivel USB flash drive

Dimension: H 3/4 x W 2 1/4 x D 3/8"

Imprint Size: H 1/2 x W 7/8"

Weight: 250 pcs / 12 lbs

Colors:



UB1629E

Matte aluminum case with swivel USB flash drive, Epoxy dome logo

Dimension: H 3/4 x W 2 1/4 x D 3/8"

Imprint Size: H 1/2 x W 7/8"

Weight: 250 pcs / 12 lbs

Colors:



UB1629

Matte aluminum case with swivel USB flash drive

Dimension: H 3/4 x W 2 1/4 x D 3/8"

Imprint Size: H 1/2 x W 7/8"

Weight: 250 pcs / 12 lbs

Colors:



UB1859

Smart U-Disk. External storage for all Windows, Linux and Mac computers. Data transfer from all Android electronic devices (smartphones, tablets-Galaxy, Xoom, etc....) that support OTG (On-The-Go) function, also work as a normal flash drive, perfect gift for business professional.

Dimension: H 5/8 x W 2 1/2 x D 3/8"

Imprint Size: H 1/2 x W 7/8"


Weight: 250 pcs / 15 lbs

Colors:

Visit www.TomaxUSA.com for our complete product line and updated pricing (website pricing prevail). Price includes a one color/one position imprint. Set up charge \$55.00(G). Extra color/position imprint add \$55.00(G) set up, plus running charge of \$0.40(G) per piece. Gift box included. For additional or alternate imprint information, see page 99. Production Time: 10-14 days after final approval.



UB1005

Swivel slim COB flash drive
Dimension: H 9/16 x W 1 9/16 x D 1/4"
Imprint Size: 'H 7/16 x W 7/16"
Weight: 250 pcs / 5 lbs
Colors: 



UB1502

Slim COB flash drive
Dimension: H 11/16 x W 1 7/8 x D 1/8"
Imprint Size: H 3/8 x W 9/16"
Weight: 200 pcs / 12 lbs




UB1503

Flip open slim COB flash drive
Dimension: H 13/16 x W 1 3/8 x D 1/8"
Imprint Size: H 3/8 x W 3/8"
Weight: 200 pcs / 11 lbs



UB1026

Swivel slim COB flash drive
Dimension: H 1/2 x W 1 1/4 x D 1/4"
Imprint Size: H 5/16 x W 1"
Weight: 250 pcs / 8 lbs
Colors: 

There are many more Tech Items on our website.
Visit www.TomaxUSA.com
for our complete product line.

UT1218

Leather case over metal with
swivel loop USB flash drive

Dimension:

H 3 1/4 x W 1 5/16 x D 1/2"

Imprint Size: H 1/2 x W 1 1/4"

Weight: 250 pcs / 21 lbs

Colors: ■

UT1604

Leather and brushed metal
tuck-style case USB flash drive

Dimension:

H 1 1/16 x W 3 5/8 x D 1/4"

Imprint Size: H 7/16 x W 1 1/4"

Weight: 250 pcs / 16 lbs

**UT1603**

Leather and brushed metal
tuck-style case USB flash drive

Dimension:

H 7/8 x W 3 3/8 x D 1/4"

Imprint Size: H 7/16 x W 1 1/4"

Weight: 250 pcs / 26 lbs

**UT1683**

Leather snap open case with polished
metal key holder USB flash drive

Dimension: H 1 1/4 x W 3 3/8 x D 1/2"

Imprint Size: H 5/8 x W 1 5/8"

Weight: 250 pcs / 21 lbs

**UB1202**

Metal swivel USB flash drive

Dimension:

H 1/2 x W 2 1/16 x D 5/16"

Imprint Size: H 3/8 x W 1 1/16"

Weight: 250 pcs / 16 lbs

Visit www.TomaxUSA.com for our complete product line and updated pricing (website pricing prevail). Price includes a one color/one position imprint. Set up charge \$55.00(G). Extra color/position imprint add \$55.00(G) set up, plus running charge of \$0.40(G) per piece. Gift box included. For additional or alternate imprint information, see page 99. Production Time: 10-14 days after final approval.



UB1278

Vertical flip open case USB flash drive
 Dimension: H 1 x W 2 7/16 x D 3/8"
 Imprint Size: H 9/16 x W 3/4"
 Weight: 250 pcs / 11 lbs
 Colors: ■ ■ ■



UB1618

Brushed aluminum and colored plastic case USB flash drive
 Dimension: H 3/4 x W 2 1/8 x D 1/4"
 Imprint Size: H 1/2 x W 11/8"
 Weight: 250 pcs / 11 lbs
 Colors: ■ ■ ■



UB1344

Distinctive design USB flash drive
 Dimension: H 3/4 x W 2 3/4 x D 5/16"
 Imprint Size: H 3/8 x W 3/4"
 Weight: 250 pcs / 9 lbs
 Colors: ■ ■ ■ ■



UB1634

Plastic case with silver accents USB flash drive
 Dimension: H 3/4 x W 2 5/8 x D 7/16"
 Imprint Size: H 3/8 x W 3/4"
 Weight: 250 pcs / 10 lbs
 Colors: ■ ■ ■



UB1660

Matte plastic case with polished silver accents USB flash drive
 Dimension: H 3/4 x W 2 15/16 x D 1/4"
 Imprint Size: H 1/2 x W 1"
 Weight: 250 pcs / 10 lbs
 Colors: ■ ■ ■ ■



UB1281

Distinctive design USB flash drive
 Dimension: H 13/16 x W 2 5/8 x D 5/16"
 Imprint Size: H 7/16 x W 1"
 Weight: 250 pcs / 9 lbs
 Colors: ■ ■ ■ ■

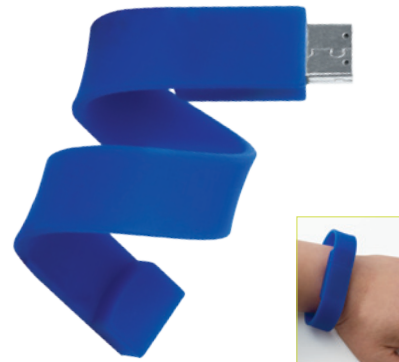
There are many more Tech Items on our website.
Visit www.TomaxUSA.com
for our complete product line.


**UB1349**

Credit card size COB slim flash drive
Full-color logo
Minimum Qty: 200 pieces
Set-up: \$100.00 (G) per logo
Running Charge:
\$0.75 (G) per logo/side
Dimension: H 2 1/16 x W 3 x D 1/8"
Imprint Size: H 2 1/16 x W 3"
Weight: 250 pcs / 21 lbs

**UB1849**

Credit card size COB slim flash drive
Dimension:
H 2 1/8 x W 3 5/16 x D 1/8"
Imprint Size: H 2 1/8 x W 3 5/16"
Weight: 250 pcs / 22 lbs
Full-color logo, MOQ 200 pcs
Set-up: \$100.00 (G) per logo
Running Charge:
\$0.75 (G) per logo/side

**UB1266**

Wrist band style USB flash drive
Dimension:
H 3/4 x W 8 5/8 x D 3/8"
Imprint Size: H 1/2 x W 7/8"
Weight: 250 pcs / 14 lbs
Colors: 

Visit www.TomaxUSA.com for our complete product line and updated pricing (website pricing prevail). Price includes a one color/one position imprint. Set up charge \$55.00(G). Extra color/position imprint add \$55.00(G) set up, plus running charge of \$0.40(G) per piece. Gift box included. For additional or alternate imprint information, see page 99. Production Time: 10-14 days after final approval.



UB 1805

Light bulb COB USB flash drive
Dimension: H 2 9/16 x W 1 1/16"
Imprint Size: H 13/16 x W 3/8"
Weight: 200 pcs / 22 lbs



UB1579

Dog tag COB slim flash drive
Dimension:
H 1 1/8 x W 2 1/16 x D 1/4"
Imprint Size: H 7/8 x W 1 1/4"
Weight: 250 pcs / 18 lbs



UB1501

Metal bottle opener slim COB flash drive
Dimension: H 9/16 x W 2 13/16 x D 1/2"
Imprint Size: H 3/8 x W 13/16"
Weight: 250 pcs / 22 lbs



UB1528

Metal "Key" shaped slim COB flash drive
Dimension: H 1 x W 2 3/16 x D 1/8"
Imprint Size: H 5/16 x W 1 3/16"
Weight: 250 pcs / 9 lbs



UB1801

Bottle opener / key shaped USB flash drive
Dimension: H 1 5/16 x W 2 15/16 x D 3/16"
Imprint Size: H 3/8 x W 1"
Weight: 250 pcs / 15 lbs

There are many more Tech Items on our website. Visit www.TomaxUSA.com for our complete product line.



UB1054

Push open wood slim COB flash drive
 Dimension: H 3/4 x W 1 1/2 x D 1/8"
 Imprint Size: H 1/2 x W 1"
 Weight: 250 pcs / 12 lbs



UB1524

Bamboo USB flash drive
 Dimension: H 2 1/2 x W 7/8 x D 1/2"
 Imprint Size: H 9/16 x W 1 3/4"
 Weight: 250 pcs / 15 lbs



UB1522

Bamboo USB flash drive
 Dimension:
 H 1 5/16 x W 2 3/8 x D 7/16"
 Imprint Size:
 H 13/16 x W 1 3/16"
 Weight: 250 pcs / 15 lbs



UB1545

Wood clip USB flash drive
 Dimension:
 H 13/16 x W 3 1/16 x D 3/4"
 Imprint Size: H 11/16 x W 1 1/8"
 Weight: 250 pcs / 16 lbs

Visit www.TomaxUSA.com for our complete product line and updated pricing (website pricing prevail). Price includes a one color/one position imprint. Set up charge \$55.00(G). Extra color/position imprint add \$55.00(G) set up, plus running charge of \$0.40(G) per piece. Gift box included. For additional or alternate imprint information, see page 99. Production Time: 10-14 days after final approval.

There are many more Tech Items on our website.
Visit www.TomaxUSA.com
for our complete product line.

TECH
Custom USB

49

we do custom projects
and we personalize
items for you

custom USB flash drives

We have done many special custom projects for corporate clients and we will custom make any shape, character and color of your need, contact us!

- Minimum quantity: 300 pcs
- Tooling charge: \$150.00 (G)
- Lead time: 4 weeks



Visit www.TomaxUSA.com for our complete product line and updated pricing (website pricing prevail). Price includes a one color/one position imprint. Set up charge \$55.00(G). Extra color/position imprint add \$55.00(G) set up, plus running charge of \$0.40(G) per piece. Gift box included. For additional or alternate imprint information, see page 99. Production Time: 10-14 days after final approval.





INTRODUCING

STYLUS

3-in-1 stylus
plastic stylus
metal stylus
stylus w/ string
crayon stylus

There are many more Stylus Items on our website.
Visit www.TomaxUSA.com
for our complete product line.



3-in-1
stylus pen
& light



SP8916

3-in-1 stylus metal ballpoint pen & LED flashlight

Size: H 4 7/16 x W 5/8 x D 7/16

Imprint: H 1/4 x W 1 1/2"

Weight: 500 pcs / 25 lbs

250	500	1000	2500 (4C)
\$2.89	\$2.69	\$2.59	\$2.49

Colors:

Visit www.TomaxUSA.com for our complete product line and updated pricing (website pricing prevail).

Price includes a one color/one position imprint or laser engraving if applicable. Set up charge \$40.00(G) + \$0.20(G)/additional running.

All Tomax stylus pens come with black ink standard and bulk packing. Production time: 5 days after final approval.



SP8933

Hulubie, twist action plastic stylus pen
 in silver barrel and color grip
 Size: H 5 3/8 x W 5/8 x D 1/2"
 Imprint: H 3/8 x W 1 1/2"
 Weight: 1000 pcs / 26 lbs

250	500	1000	2500 (4C)
\$0.95	\$0.85	\$0.75	\$0.65

Colors: 



SP8931

Hulubie, twist action plastic stylus pen
 in metallic color barrel
 Size: H 5 3/8 x W 5/8 x D 1/2"
 Imprint: H 3/8 x W 1 1/2"
 Weight: 1000 pcs / 26 lbs

250	500	1000	2500 (4C)
\$0.95	\$0.85	\$0.75	\$0.65

Colors: 

There are many more Stylus Items on our website.
Visit www.TomaxUSA.com
for our complete product line.

SP8870

Gem stone metal ballpoint pen with stylus

Size: H 5 3/4 x W 1/2 x D 3/8"

Imprint: H 1/4 x W 1 1/4"

Weight: 500 pcs / 25 lbs

250	500	1000	2500 (4C)
\$3.39	\$3.19	\$3.09	\$2.99

Colors:



fresh take
on a classic

SP8901

Classic twist-action metal ballpoint pen
with stylus

Size: H 5 1/2 x W 3/8 x D 5/16"

Imprint: H 1/4 x W 1 1/2"

Weight: 1000 pcs / 34 lbs

250	500	1000	2500 (4C)
\$1.99	\$1.89	\$1.79	\$1.69

Colors:



Visit www.TomaxUSA.com for our complete product line and updated pricing (website pricing prevail).

Price includes a one color/one position imprint or laser engraving if applicable. Set up charge \$40.00(G) + \$0.20(G)/additional running.

All Tomax stylus pens come with black ink standard and bulk packing. Production time: 5 days after final approval.

There are many more Stylus Items on our website.
 Visit www.TomaxUSA.com
 for our complete product line.

add a
 splash of
 color



SP8915

Metal ballpoint pen with color coordinated stylus, twist open
 Size: H 5 x W 7/16 x D 5/16"
 Imprint: H 1/4 x W 1 1/4"
 Weight: 1000 pcs / 32 lbs

250	500	1000	2500 (4C)
\$1.59	\$1.49	\$1.39	\$1.29

Colors:

Visit www.TomaxUSA.com for our complete product line and updated pricing (website pricing prevail).
 Price includes a one color/one position imprint or laser engraving if applicable. Set up charge \$40.00(G) + \$0.20(G)/additional running.
 All Tomax stylus pens come with black ink standard and bulk packing. Production time: 5 days after final approval.

There are many more Stylus Items on our website.
Visit www.TomaxUSA.com
for our complete product line.

SP8851

Aluminum barrel stylus with stretchable string
attach to your cellphone 3.5mm jack

Size: H 2 1/2 x W 3/8 x D 3/8"

Imprint: H 1/4 x W 1 3/4"

Weight: 1000 pcs / 17 lbs

250	500	1000	2500 (4C)
\$1.29	\$1.19	\$1.09	\$0.99

Colors: 

**SP8842**

Twist open ballpoint pen with stylus
cap and stretchable string attach to
your cellphone 3.5mm jack

Size: H 3 3/8 x W 3/8 x D 3/8"

Imprint: H 1/4 x W 1 3/4"

Weight: 1000 pcs / 14 lbs

250	500	1000	2500 (4C)
\$1.19	\$1.09	\$0.99	\$0.89

Colors: 

**SP8878**

Plastic gem stone stylus with stretchable string

Size: H 2 1/2 x W 3/8 x D 3/8"

Imprint: H 1/4 x W 1 1/4"

Weight: 1000 pcs / 12 lbs

250	500	1000	2500 (4C)
\$1.59	\$1.49	\$1.39	\$1.29

Colors: 



Visit www.TomaxUSA.com for our complete product line and updated pricing (website pricing prevail).

Price includes a one color/one position imprint or laser engraving if applicable. Set up charge \$40.00(G) + \$0.20(G)/additional running.

All Tomax stylus pens come with black ink standard and bulk packing. Production time: 5 days after final approval.

crayon
stylus
pen



SP8524 NEW

Crayon Stylus with twist open pen
 Size: H 3 7/8 x W 9/16 x D 9/16"
 Imprint: H 1/2 x W 1 1/2"
 Weight: 500pcs / 22 lbs

250	500	1000	2500 (4C)
\$1.79	\$1.69	\$1.59	\$1.49

Colors:

SP8854

Crayon stylus
 Size: H 3 1/2 x W 9/16 x D 9/16"
 Imprint: H 1/2 x W 1 1/2"
 Weight: 500pcs / 19 lbs

250	500	1000	2500 (4C)
\$1.59	\$1.49	\$1.39	\$1.29

Colors:



There are many more Stylus Items on our website. Visit www.TomaxUSA.com for our complete product line.

thumbs
up
stylus



SP8554 NEW

Stylus pen on finger

Size: H 5 3/4 x W 9/16 x D 3/8"

Imprint: H 5/8 x W 1 1/2"

Weight: 1000pcs / 28.6 lbs

250	500	1000	2500 (4C)
\$1.19	\$1.09	\$0.99	\$0.89

Colors:

Visit www.TomaxUSA.com for our complete product line and updated pricing (website pricing prevail). Price includes a one color/one position imprint or laser engraving if applicable. Set up charge \$40.00(G) + \$0.20(G)/additional running. All Tomax stylus pens come with black ink standard and bulk packing. Production time: 5 days after final approval.

There are many more Stylus Items on our website.
Visit www.TomaxUSA.com
for our complete product line.



SP8553 NEW

Gunmetal push open stylus pen
Size: H 5 3/4 x W 9/16 x D 3/8"
Imprint: H 1/4 x W 1 1/4"
Weight: 500pcs / 22 lbs

250	500	1000	2500 (4C)
\$1.59	\$1.49	\$1.39	\$1.29

Colors:

Visit www.TomaxUSA.com for our complete product line and updated pricing (website pricing prevail).
Price includes a one color/one position imprint or laser engraving if applicable. Set up charge \$40.00(G) + \$0.20(G)/additional running.
All Tomax stylus pens come with black ink standard and bulk packing. Production time: 5 days after final approval.

There are many more Stylus Items on our website.
Visit www.TomaxUSA.com
for our complete product line.

stylus
with
cleaner

SP8525 NEW

Plastic stylus pen with screen cleaner

Size: H 5 3/4 x W 9/16 x D 3/8"

Imprint: H 5/8 x W 1 1/2"

Weight: 1000pcs / 21 lbs

250	500	1000	2500 (4C)
\$1.29	\$1.19	\$1.09	\$0.99

Colors:



Visit www.TomaxUSA.com for our complete product line and updated pricing (website pricing prevail).

Price includes a one color/one position imprint or laser engraving if applicable. Set up charge \$40.00(G) + \$0.20(G)/additional running.

All Tomax stylus pens come with black ink standard and bulk packing. Production time: 5 days after final approval.



SP8533 NEW

Hulubie, stylus pen with screen cleaner

Size: H 5 3/4 x W 9/16 x D 3/8"

Imprint: H 5/8 x W 1 1/2"

Weight: 1000pcs / 28.6 lbs

250	500	1000	2500 (4C)
\$1.29	\$1.19	\$1.09	\$0.99

Colors:



SP8556 NEW

Plastic stylus pen with screen cleaner

Size: H 5 3/4 x W 9/16 x D 3/8"

Imprint: H 5/8 x W 1 1/2"

Weight: 1000pcs / 18.7 lbs

250	500	1000	2500 (4C)
\$1.19	\$1.09	\$0.99	\$0.89

Colors:

Visit www.TomaxUSA.com for our complete product line and updated pricing (website pricing prevail).
 Price includes a one color/one position imprint or laser engraving if applicable. Set up charge \$40.00(G) + \$0.20(G)/additional running.
 All Tomax stylus pens come with black ink standard and bulk packing. Production time: 5 days after final approval.

There are many more Stylus Items on our website.
Visit www.TomaxUSA.com
for our complete product line.



PB8518 NEW

Tubular shaped pen package
Size: H 5 7/8 x W 15/16" x D 15/16"
Weight: 200pcs / 11 lbs
MOQ 250 PCS
\$1.20 (G)/pc Blank Goods

one color imprint available: Set-up
\$55.00 (G), run charge: \$0.40 (G)/pc
imprint: H 1/2 x W 1 1/2"

SP8981

Aluminum stylus pen
Size: H 5 1/4 x W 1/2 x D 1/2"
Imprint: H 3/8 x W 1 1/2"
Weight: 500 pcs / 25 lbs

250	500	1000	2500 (4C)
\$3.19	\$2.99	\$2.89	\$2.79



Visit www.TomaxUSA.com for our complete product line and updated pricing (website pricing prevail).

Price includes a one color/one position imprint or laser engraving if applicable. Set up charge \$40.00(G) + \$0.20(G)/additional running.
All Tomax stylus pens come with black ink standard and bulk packing. Production time: 5 days after final approval.

SP8812

2-in-1 stylus pen

Size: H 4 1/2 x W 1/2 x D 1/2"

Imprint: H 3/8 x W 1"

Weight: 1000 pcs / 20 lbs

250	500	1000	2500 (4C)
\$1.19	\$1.09	\$0.99	\$0.89

Colors: 



SP8746

Stylus with highlighter

Size: H 5 3/4 x W 5/8 x D 1/2"

Imprint: H 3/8 x W 1 1/2"

Weight: 1000 pcs / 30 lbs

250	500	1000	2500 (4C)
\$1.29	\$1.19	\$1.09	\$0.99

Colors: 



There are many more Stylus Items on our website.
Visit www.TomaxUSA.com
for our complete product line.

SP8794

Plastic stylus pen

Size: H 5 3/4 x W 7/16 x D 7/16"

Imprint: H 1/4 x W 1 1/2"

Weight: 1000 pcs / 16 lbs

250	500	1000	2500 (4C)
\$0.79	\$0.69	\$0.59	\$0.49

Colors:    



SP8914

Bulldog, UV finished unique stylus ballpoint pen

Size: H 3 3/4 x W 11/16 x D 5/8"

Imprint: H 3/8 x W 1"

Weight: 500 pcs / 14 lbs

250	500	1000	2500 (4C)
\$1.59	\$1.49	\$1.39	\$1.29



SP8822

3-in-1 LED flashlight, laser pointer and stylus

Size: H 4 x W 3/4 x D 5/8"

Imprint: H 3/8 x W 1"

Weight: 500 pcs / 16 lbs

250	500	1000	2500 (4C)
\$2.29	\$2.09	\$1.99	\$1.89

Visit www.TomaxUSA.com for our complete product line and updated pricing (website pricing prevail).

Price includes a one color/one position imprint or laser engraving if applicable. Set up charge \$40.00(G) + \$0.20(G)/additional running.

All Tomax stylus pens come with black ink standard and bulk packing. Production time: 5 days after final approval.

precision
comfort
lightweight
control

SP8791

Plastic stylus pen

Size: H 5 3/4 x W 7/16 x D 7/16"

Imprint: H 1/4 x W 1 1/2"

Weight: 1000 pcs / 16 lbs

250	500	1000	2500 (4C)
\$0.79	\$0.69	\$0.59	\$0.49

Colors: 







INTRODUCING

FLASHLIGHT

flashlight keychain

lightbulb keychain

flashlight bottle opener

plastic flashlight

There are many more Flashlight Items on our website.
Visit www.TomaxUSA.com
for our complete product line.

**FL7157**

Aluminum flashlight with LED bulb

Size: H 3 x W 9/16"

Imprint: H 3/8 x W 1 1/4"

Weight: 500 pcs / 18 lbs

100	250	500	1000 (4C)
\$2.59	\$2.39	\$2.19	\$1.99

Colors:

**FL7216**

9 LED light with aluminum body
and wrist strap

Size: H 3 1/2 x W 1"

Imprint: H 1/2 x W 1 1/8"

Weight: 200 pcs / 25 lbs

100	250	500	1000 (4C)
\$2.69	\$2.49	\$2.29	\$2.09

Colors:

Visit www.TomaxUSA.com for our complete product line and updated pricing (website pricing prevail). Price includes a one color/one position imprint. Set up charge \$55.00(G). Extra color/position imprint add \$55.00(G) set up, plus running charge of \$0.40(G) per piece. Gift box included. For additional or alternate imprint information, see page 99. Production Time: 5 - 7 days after final approval.

another
bright idea



FL7160

Triangular aluminum flashlight with LED bulb

Size: H 2 3/4 x W 5/8"

Imprint: H 3/8 x W 1 3/8"

Weight: 500 pcs / 23 lbs

100	250	500	1000 (4C)
\$2.89	\$2.69	\$2.49	\$2.29

Colors:



KL7167

5 LED light, with matching 1 1/2" carabiner

Size: H 2 1/2 x W 5/8"

Imprint: H 1/4 x W 1 1/8"

Weight: 500 pcs / 23 lbs

100	250	500	1000 (4C)
\$2.59	\$2.39	\$2.19	\$1.99

Colors:



KL7181

3 LED aluminum LED key chain flashlight

Size: H 2 1/8 x W 5/8"

Imprint: H 3/16 x W 5/8"

Weight: 500 pcs / 23 lbs

100	250	500	1000 (4C)
\$2.59	\$2.39	\$2.19	\$1.99

Colors:



KL7163

Rubberized LED light with key clip

Size: H 2" x W 3/4"

Imprint: H 1/2 x W 3/4"

Weight: 400 pcs / 20 lbs

100	250	500	1000 (4C)
\$2.39	\$2.19	\$1.99	\$1.79

Colors:

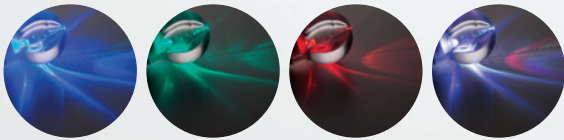
There are many more Flashlight Items on our website.
Visit www.TomaxUSA.com
for our complete product line.

light bulb on keychain

KL7185

Light bulb with keychain, lights up in 7 different colors, gradually changes and then blinks
Size: H 3 3/4 x W 1 1/4"
Imprint: H 1/2 x W 1/2"
Weight: 500 pcs / 25 lbs

100	250	500	1000 (4C)
\$2.39	\$2.19	\$1.99	\$1.79



KL7139

Aluminum LED flashlight with bottle opener
Size: H 2 3/4 x W 1/2 x D 3/4"
Imprint: H 3/8 x W 3/4"
Weight: 500 pcs / 27 lbs

100	250	500	1000 (4C)
\$3.09	\$2.89	\$2.69	\$2.49

Colors: 



KL7183

LED flashlight with retractable bottle opener
Size: H 2 3/4 x W 3/4"
Imprint: H 1/4 x W 1"
Weight: 250 pcs / 20 lbs

100	250	500	1000 (4C)
\$2.89	\$2.69	\$2.59	\$2.49

Colors: 

Visit www.TomaxUSA.com for our complete product line and updated pricing (website pricing prevail). Price includes a one color/one position imprint. Set up charge \$55.00(G). Extra color/position imprint add \$55.00(G) set up, plus running charge of \$0.40(G) per piece. Gift box included. For additional or alternate imprint information, see page 99. Production Time: 5 - 7 days after final approval.



KL7516 NEW

Plastic LED light with Keyring
 Size: H 1 1/4 x W 2 9/16 x D 3/8"
 Imprint: H 1/2 x W 1"
 Weight: 500 pcs / 26.4 lbs

100	250	500	1000 (4C)
\$1.69	\$1.49	\$1.39	\$1.29

Colors:



KL7129

Hook on light with 3 different light settings-
 strobe, flashing and solid LED flashlight
 Size: H 4 3/8 x W 1 1/2"
 Imprint: H 3/4 x W 1 3/4"
 Weight: 500 pcs / 20 lbs

100	250	500	1000 (4C)
\$2.49	\$2.29	\$2.09	\$1.89

Colors:



KL7020

LED keylight
 Size: H 2 3/8 x W 1"
 Imprint: H 3/4 x W 1 1/2"
 Weight: 500 pcs / 16 lbs

100	250	500	1000 (4C)
\$1.29	\$1.09	\$0.99	\$0.89

Colors:







INTRODUCING

DRINKWARE

water bottle

stainless steel mug

plastic mug

plastic mug w/ straw

There are many more Drinkware Items on our website.
Visit www.TomaxUSA.com
for our complete product line.

BPA
Free
bottle

MU8027 BPA FREE

16oz Tritan water bottle, BPA free

Size: H 9 X W 2 5/8"

Imprint: H 2 X W 2"

Weight: 60 pcs / 22 lbs

48	96	240	480 (4C)
\$5.19	\$4.99	\$4.79	\$4.59

Colors:   



Visit www.TomaxUSA.com for our complete product line and updated pricing (website pricing prevail). Price includes a one color/one position imprint. Set up charge \$55.00(G). Extra color/position imprint add \$55.00(G) set up, plus running charge of \$0.40(G) per piece. Gift box included. For additional or alternate imprint information, see page 99. Production Time: 5 - 7 days after final approval.

There are many more Drinkware Items on our website.
 Visit www.TomaxUSA.com
 for our complete product line.

MU8028 BPA FREE

24oz Tritan water bottle with color cap,
 BPA free
 Size: H 10 1/2 x W 2 3/4"
 Imprint: H 2 x W 4 1/2"
 Weight: 60 pcs / 17 lbs

48	96	240	480 (4C)
\$4.59	\$4.39	\$4.19	\$3.99

Colors: ■ ■ ■



MU8029 BPA FREE

24oz Tritan water bottle with color
 coordinated straw, BPA free
 Size: H 9 X W 3 1/2"
 Imprint: H 2 X W 2 1/2"
 Weight: 48 pcs / 16 lbs

48	96	240	480 (4C)
\$4.59	\$4.39	\$4.19	\$3.99

Colors: ■ ■ ■



Visit www.TomaxUSA.com for our complete product line and updated pricing (website pricing prevail). Price includes a one color/one position imprint. Set up charge \$55.00(G). Extra color/position imprint add \$55.00(G) set up, plus running charge of \$0.40(G) per piece. Gift box included. For additional or alternate imprint information, see page 99. Production Time: 5-7 days after final approval.

There are many more Drinkware Items on our website.
Visit www.TomaxUSA.com
for our complete product line.

MU8026

14oz double injection ABS/AS mug

Size: H 8 3/8 x W 2 3/4"

Imprint: H 5 x W 2 1/2"

Weight: 36 pcs / 26 lbs

48	96	240	480 (4C)
----	----	-----	----------

\$9.59	\$9.39	\$9.19	\$8.99
--------	--------	--------	--------

Colors:  



Visit www.TomaxUSA.com for our complete product line and updated pricing (website pricing prevail). Price includes a one color/one position imprint. Set up charge \$55.00(G). Extra color/position imprint add \$55.00(G) set up, plus running charge of \$0.40(G) per piece. Gift box included. For additional or alternate imprint information, see page 99. Production Time: 5 - 7 days after final approval.

MU8022 BPA FREE

24oz Tritan candy jar mug, BPA free
 Size: H 5 7/8 x W 3 1/2"
 Imprint: H 2 1/2 x W 3"
 Weight: 24 pcs / 8 lbs

48	96	240	480 (4C)
\$4.09	\$3.89	\$3.69	\$3.49

Colors: 



MU8030 BPA FREE

24oz Tritan BPA free water bottle, small opening for drink and big opening for ice
 Size: H 9 1/4 x W 2 3/4"
 Imprint: H 2 1/4" X W 2 1/4"
 Weight: 48 pcs / 15 lbs

48	96	240	480 (4C)
\$5.59	\$5.39	\$5.19	\$4.99

Colors: 



MU8051

16oz double wall gel plastic cup with straw
 Size: H 6 1/4 x W 3 15/16"
 Imprint: H 2 x W 2"
 Weight: 24 pcs / 15 lbs

48	96	240	480 (4C)
\$4.89	\$4.69	\$4.49	\$4.29

Colors: 



MU8020

16oz Coffee mug
 Size: H 7 1/4 x W 3 3/8"
 Imprint: H 1 x W 2"
 Weight: 48 pcs / 20 lbs

48	96	240	480 (4C)
\$3.59	\$3.39	\$3.19	\$2.99

Colors: 



There are many more Drinkware Items on our website.
 Visit www.TomaxUSA.com
 for our complete product line.

stainless
 steel
 mugs

MU8090

16oz stainless steel mug
 Size: H 7 3/8 x W 3 1/8"
 Imprint: H 1 1/2 x W 3"
 Weight: 24 pcs / 14 lbs

48	96	240	480 (4C)
\$4.29	\$4.09	\$3.89	\$3.69

Colors: 



MU8034

16oz stainless steel mug
 Size: H 7 x W 3 1/2"
 Imprint: H 1 x W 2 1/2"
 Weight: 25 pcs / 14 lbs
 Colors:

48	96	240	480 (4C)
\$4.09	\$3.89	\$3.69	\$3.49

Colors: 



MU8045

16oz stainless steel mug
 Size: H 7 7/8 x W 3 1/4"
 Imprint: H 1 1/4 x W 2 1/4"
 Weight: 36 pcs / 25 lbs

48	96	240	480 (4C)
\$5.89	\$5.69	\$5.49	\$5.29

Colors: 

Visit www.TomaxUSA.com for our complete product line and updated pricing (website pricing prevail). Price includes a one color/one position imprint. Set up charge \$55.00(G). Extra color/position imprint add \$55.00(G) set up, plus running charge of \$0.40(G) per piece. Gift box included. For additional or alternate imprint information, see page 99. Production Time: 5 - 7 days after final approval.

There are many more Drinkware Items on our website.
 Visit www.TomaxUSA.com
 for our complete product line.



MU8056 NEW BPA FREE

23 2/3oz BPA Free Water Bottle with a small opening for drink and a big opening for ice
 Size: H 10 3/8 x W 2 3/4"

Imprint: H 4 x W 2"

Weight: 50 pcs / 16.5 lbs

48	96	240	480 (4C)
\$5.59	\$5.39	\$5.19	\$4.99

Colors:

Visit www.TomaxUSA.com for our complete product line and updated pricing (website pricing prevail). Price includes a one color/one position imprint. Set up charge \$55.00(G). Extra color/position imprint add \$55.00(G) set up, plus running charge of \$0.40(G) per piece. Gift box included. For additional or alternate imprint information, see page 99. Production Time: 5-7 days after final approval.

There are many more Drinkware Items on our website.
Visit www.TomaxUSA.com
for our complete product line.



versatile
design
mug

MU8097 NEW

15oz stainless steel outer and plastic
liner mug with flip lip

Size: H 8 1/4 x W 3 1/4"

Imprint: H 1 x W 2 1/2"

Weight: 50 pcs / 28.6 lbs

48	96	240	480 (4C)
\$5.59	\$5.39	\$5.19	\$4.99

Colors:



Visit www.TomaxUSA.com for our complete product line and updated pricing (website pricing prevail). Price includes a one color/one position imprint. Set up charge \$55.00(G). Extra color/position imprint add \$55.00(G) set up, plus running charge of \$0.40(G) per piece. Gift box included. For additional or alternate imprint information, see page 99. Production Time: 5 - 7 days after final approval.



double wall plastic mug

MU8055 NEW BPA FREE

30oz BPA Free Water Bottle with 2 opening, small for drink and the big for ice

Size: H 8 1/4 x W 3 1/4"

Imprint: H 1 X W 2 1/2"

Weight: 50 pcs / 20.5 lbs

48	96	240	480 (4C)
\$6.59	\$6.39	\$6.19	\$5.99

Colors:



MU8098 NEW

16oz stainless steel outer and plastic liner mug with rubber sleeve for holding

Size: H 7 7/8 x W 3 1/4"

Imprint: H 1 1/2 x W 2 1/2"

Weight: 50 pcs / 26.4 lbs

48	96	240	480 (4C)
\$4.59	\$4.39	\$4.19	\$3.99

Colors:



Visit www.TomaxUSA.com for our complete product line and updated pricing (website pricing prevail). Price includes a one color/one position imprint. Set up charge \$55.00(G). Extra color/position imprint add \$55.00(G) set up, plus running charge of \$0.40(G) per piece. Gift box included. For additional or alternate imprint information, see page 99. Production Time: 5-7 days after final approval.

There are many more Drinkware Items on our website. Visit www.TomaxUSA.com for our complete product line.



MU8538 NEW

22oz double wall AS body, PP material straw, with snack container on the top of mug, ABS inner box

Size: H 9 1/2 x W 4"

Imprint: H 2 1/4 x W 2 1/4"

Weight: 50 pcs / 35.2 lbs

48	96	240	480 (4C)
\$6.09	\$5.89	\$5.69	\$5.49

Colors:



Visit www.TomaxUSA.com for our complete product line and updated pricing (website pricing prevail). Price includes a one color/one position imprint. Set up charge \$55.00(G). Extra color/position imprint add \$55.00(G) set up, plus running charge of \$0.40(G) per piece. Gift box included. For additional or alternate imprint information, see page 99. Production Time: 5 - 7 days after final approval.

There are many more Drinkware Items on our website.
 Visit www.TomaxUSA.com
 for our complete product line.



MU8539 NEW

16oz double wall plastic straw mug
 with a special juicer top for lemon
 tea, juice, double wall AS material,
 PP straw, ABS inner box
 Size: H 8 x W 4"

Imprint: H 2 1/4 x W 2 1/4"

Weight: 50 pcs / 31 lbs

48	96	240	480 (4C)
\$5.99	\$5.79	\$5.59	\$5.39

Colors:



Visit www.TomaxUSA.com for our complete product line and updated pricing (website pricing prevail). Price includes a one color/one position imprint. Set up charge \$55.00(G). Extra color/position imprint add \$55.00(G) set up, plus running charge of \$0.40(G) per piece. Gift box included. For additional or alternate imprint information, see page 99. Production Time: 5-7 days after final approval.

GIFT SETS

Mouse Sets

There are many more Gift Sets on our website. Visit www.TomaxUSA.com for our complete product line.



GP5489 NEW

MS1829, EP328, P54
Wireless mouse with zipper earphone pouch set

Imprint (Mouse): H 5/8 x W 1 1/2"
Imprint (Earphone): H 3/8 x W 1/4"

25	50	100	250 (4C)
\$31.80	\$29.80	\$28.40	\$27.45

Colors:



GB9129

MS1829 & SP8901 in Deluxe Gift Box
Wireless mouse with stylus pen gift set
Imprint (Mouse): H 5/8 x W 1 1/2"
Imprint (Stylus): H 1/4 x W 1 1/2"

50	100	250	500 (4C)
\$18.60	\$18.10	\$17.45	\$16.90

Colors:



GB84

MS1829 & AD300 in Deluxe Gift Box
Wireless mouse with AC/DC charger gift set
Imprint (Mouse): H 5/8 x W 1 1/2"
Imprint (Charger): H 1 5/8 x W 1 5/8"

25	50	100	250 (4C)
\$29.90	\$27.90	\$26.50	\$25.35

Colors:

Visit www.TomaxUSA.com for our complete product line and updated pricing (website pricing prevail). Price includes a one color/one position imprint or laser engraving on each item in set except on gift box or pouch. Add a one-time \$90.00 (G) set-up charge for 2 items set, or \$135.00 (G) set-up charge for 3 items set. Extra color/position imprint add \$55.00 (G) set up, plus running charge \$0.40 (G) per item/piece. **The product color grade might not match exactly, please allow a slight color variation for each item in set. Production Time: 7-10 days after final approval.

There are many more Gift Sets on our website.
 Visit for details www.TomaxUSA.com.
 for our complete product line visit www.tomaxusa.com.



GB9519

MS1819 & SP8915 in Deluxe Gift Box
 Wireless mouse with stylus pen gift set
 Imprint (Mouse): H 1/2 x W 1"
 Imprint (Stylus): H 1/4 x W 1 1/4"

50	100	250	500 (4C)
\$14.80	\$14.10	\$13.60	\$13.20

Visit www.TomaxUSA.com for our complete product line and updated pricing (website pricing prevail). Price includes a one color/one position imprint or laser engraving on each item in set except on gift box or pouch. Add a one-time \$90.00 (G) set-up charge for 2 items set, or \$135.00 (G) set-up charge for 3 items set. Extra color/position imprint add \$55.00 (G) set up, plus running charge \$0.40 (G) per item/piece. **The product color grade might not match exactly, please allow a slight color variation for each item in set. Production Time: 7-10 days after final approval.

GP3829

PC3290, AD300, MS1829, & CB3N07
 Power bank with AC/DC charger
 and wireless mouse set

Imprint (Power bank): H 2 1/2 x W 1 1/2"
 Imprint (Charger): H 1 5/8 x W 1 5/8"
 Imprint (Mouse): H 5/8 x W 1 1/2"

25	50	100	250 (4C)
\$65.30	\$62.30	\$60.50	\$58.75

Colors:



GP15919

PC3291, AD3010, EP326 & P15
 Power bank with AC charger and
 earphone gift set

Imprint (Power bank): H 2 1/2 x W 1 1/2"
 Imprint (Charger): H 1 1/4 x W 1/2"
 Imprint (Earphone): H 3/8 x W 1/4"

25	50	100	250 (4C)
\$58.75	\$55.75	\$53.35	\$51.90

Colors:



GB329

PC3291 & AD300 in Deluxe Gift Box
 Power bank and AC/DC charger gift set

Imprint (Power bank): H 2 1/2 x W 1 1/2"
 Imprint (Charger): H 1 5/8 x W 1 5/8"

25	50	100	250 (4C)
\$45.90	\$43.90	\$42.50	\$41.30

Colors:



Visit www.TomaxUSA.com for our complete product line and updated pricing (website pricing prevail). Price includes a one color/one position imprint or laser engraving on each item in set except on gift box or pouch. Add a one-time \$90.00 (G) set-up charge for 2 items set, or \$135.00 (G) set-up charge for 3 items set. Extra color/position imprint add \$55.00 (G) set up, plus running charge \$0.40 (G) per item/piece. **The product color grade might not match exactly, please allow a slight color variation for each item in set. Production Time: 7-10 days after final approval.

GIFT SETS

Power Bank Sets

There are many more Gift Sets on our website.
Visit www.TomaxUSA.com
for our complete product line.

**GP3429**

PC3104, AD300, MS1829, & CB3N07
Power bank with AC/DC charger and
wireless mouse set

Imprint (Power bank): H 1/2" x W 1 1/2"

Imprint (Charger): H 1 5/8" x W 1 5/8"

Imprint (Mouse): H 5/8" x W 1 1/2"

25	50	100	250 (4C)
\$89.30	\$86.30	\$83.90	\$81.75

**GP15416**

PC3104, AD3010, EP326 & P15
Power bank with AC charger and
earphone gift set

Imprint (Power bank): H 1/2" x W 1 1/2"

Imprint (Charger): H 1 5/8" x W 1 5/8"

Imprint (Earphone): H 3/8" x W 1/4"

25	50	100	250 (4C)
\$82.75	\$79.75	\$76.75	\$74.90

Visit www.TomaxUSA.com for our complete product line and updated pricing (website pricing prevail). Price includes a one color/one position imprint or laser engraving on each item in set except on gift box or pouch. Add a one-time \$90.00 (G) set-up charge for 2 items set, or \$135.00 (G) set-up charge for 3 items set. Extra color/position imprint add \$55.00 (G) set up, plus running charge \$0.40 (G) per item/piece. **The product color grade might not match exactly, please allow a slight color variation for each item in set. Production Time: 7-10 days after final approval.

There are many more Gift Sets on our website.
 Visit www.TomaxUSA.com
 for our complete product line.

GP1574 NEW

PC3714, AD315, & P15

Slim power bank with AC charger gift set

Imprint (Power bank): H 2 x W 1 3/4"

Imprint (Charger): H 3/4 x W 1"

25	50	100	250 (4C)
\$52.40	\$50.40	\$48.40	\$46.80



Visit www.TomaxUSA.com for our complete product line and updated pricing (website pricing prevail). Price includes a one color/one position imprint or laser engraving on each item in set except on gift box or pouch. Add a one-time \$90.00 (G) set-up charge for 2 items set, or \$135.00 (G) set-up charge for 3 items set. Extra color/position imprint add \$55.00 (G) set up, plus running charge \$0.40 (G) per item/piece. **The product color grade might not match exactly, please allow a slight color variation for each item in set. Production Time: 7-10 days after final approval.

GIFT SETS

Power Bank Sets

There are many more Gift Sets on our website. Visit www.TomaxUSA.com for our complete product line.



GB3739 NEW

PC3000WT, MS1829WS, & AD480 in Big Deluxe Gift Box
High capacity power bank and AC/DC charger with wireless mouse deluxe gift set

Imprint (Power bank): H 2 x W 1 3/4"

Imprint (Charger): H 3/4 x W 1"

Imprint (Mouse): H 5/8 x W 1 1/2"

25	50	100	250 (4C)
\$93.70	\$90.70	\$88.30	\$85.75

Visit www.TomaxUSA.com for our complete product line and updated pricing (website pricing prevail). Price includes a one color/one position imprint or laser engraving on each item in set except on gift box or pouch. Add a one-time \$90.00 (G) set-up charge for 2 items set, or \$135.00 (G) set-up charge for 3 items set. Extra color/position imprint add \$55.00 (G) set up, plus running charge \$0.40 (G) per item/piece. **The product color grade might not match exactly, please allow a slight color variation for each item in set. Production Time: 7-10 days after final approval.

There are many more Gift Sets on our website.
 Visit www.TomaxUSA.com
 for our complete product line.



GP5481 NEW

EP328, AD531, & P54

Zipper earphone with rapid AC charger
 gift set

Imprint (Charger): H 1 x W 1"

Imprint (Earphone): H 5/8 x W 7/8"

50	100	250	500 (4C)
\$29.80	\$27.80	\$27.00	\$25.85

Colors:



Visit www.TomaxUSA.com for our complete product line and updated pricing (website pricing prevail). Price includes a one color/one position imprint or laser engraving on each item in set except on gift box or pouch. Add a one-time \$90.00 (G) set-up charge for 2 items set, or \$135.00 (G) set-up charge for 3 items set. Extra color/position imprint add \$55.00 (G) set up, plus running charge \$0.40 (G) per item/piece. **The product color grade might not match exactly, please allow a slight color variation for each item in set. Production Time: 7-10 days after final approval.

GIFT SETS

Music Sets

There are many more Gift Sets on our website. Visit www.TomaxUSA.com for our complete product line.



GP6526 NEW

EP326, AD300, & P65

Earphone with AC/DC charger gift set

Imprint (Charger): H 1 5/8" x W 1 5/8"

Imprint (Earphone): H 5/8" x W 7/8"

50	100	250	500 (4C)
\$21.40	\$19.40	\$18.40	\$17.45

Colors:



GP6586 NEW

EP368, SP8915, & P65

Earphone with stylus pouch set

Imprint (Stylus): H 1/4" x W 1 1/4"

Imprint (Earphone): H 1 1/2" x W 1 1/2"

(on clear case)

50	100	250	500 (4C)
\$12.70	\$11.60	\$11.10	\$10.45

Colors:

Visit www.TomaxUSA.com for our complete product line and updated pricing (website pricing prevail). Price includes a one color/one position imprint or laser engraving on each item in set except on gift box or pouch. Add a one-time \$90.00 (G) set-up charge for 2 items set, or \$135.00 (G) set-up charge for 3 items set. Extra color/position imprint add \$55.00 (G) set up, plus running charge \$0.40 (G) per item/piece. **The product color grade might not match exactly, please allow a slight color variation for each item in set. Production Time: 7-10 days after final approval.

There are many more Gift Sets on our website.
 Visit www.TomaxUSA.com
 for our complete product line.



GP8563

SP8553, KL7516, & P65

LED flashlight with stylus pouch set

Imprint (Stylus): H 1/4 x W 1 1/4"

Imprint (LED): H 1/2 x W 1"

50	100	250	500 (4C)
\$4.59	\$4.39	\$4.09	\$3.89

Colors:



Visit www.TomaxUSA.com for our complete product line and updated pricing (website pricing prevail). Price includes a one color/one position imprint or laser engraving on each item in set except on gift box or pouch. Add a one-time \$90.00 (G) set-up charge for 2 items set, or \$135.00 (G) set-up charge for 3 items set. Extra color/position imprint add \$55.00 (G) set up, plus running charge \$0.40 (G) per item/piece. **The product color grade might not match exactly, please allow a slight color variation for each item in set. Production Time: 7-10 days after final approval.

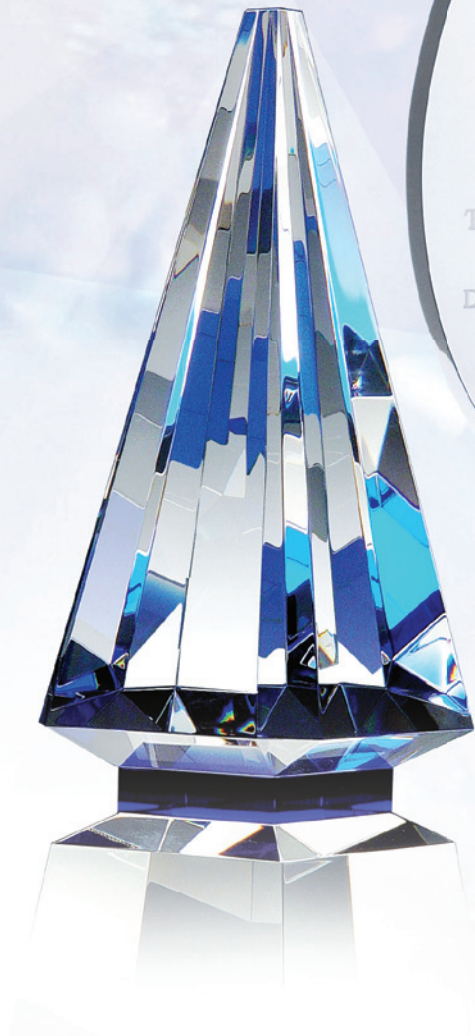


2007
NASCAR
Craftsman
Truck Series

DRIVER'S CHAMPIONSHIP

MIKE SKINNER

Bill Davis Racing





INTRODUCING

CRYSTAL

Visit www.TomaxUSA.com/Awards--Crystal

for our complete crystal product line

(more than 500 crystal models to choose from)



PC3500	15
PC3520	23
PC3589	21
PC3714	24
PC3800	20
PC3820	20
PC9101	28
PC9245	27
PC9319	26
PC9701	28
PC9705	29

R RS0633	39
RS1602	38
RS3113	38
RS3213	37
RS3518	37

S SP8524	57
SP8525	60
SP8533	61
SP8553	59

SP8554	58
SP8556	61
SP8746	63
SP8791	65
SP8794	64
SP8812	63
SP8822	64
SP8842	56
SP8851	56
SP8854	57
SP8870	54
SP8878	56
SP8901	54
SP8914	64
SP8915	55
SP8916	52
SP8931	53
SP8933	53
SP8981	62

U UB1005	43
UB1026	43

UB1054	48
UB1202	44
UB1266	46
UB1278	45
UB1281	45
UB1344	45
UB1349	46
UB1501	47
UB1502	43
UB1503	43
UB1522	48
UB1524	48
UB1528	47
UB1545	48
UB1579	47
UB1618	45
UB1629	42
UB1629C	42
UB1629E	42
UB1634	45
UB1660	45
UB1801	47

UB1805	47
UB1849	46
UB1859	42
UT1218	44
UT1603	44
UT1604	44
UT1683	44

Visit www.TomaxUSA.com for our complete product line. Check our updated pricing on website, website pricing prevail. This 2015 catalog supersedes all our previous catalogs.

Artwork

- Email artwork: to art@tomaxusa.com in the following PC or MAC versions: Illustrator, Photoshop in EPS, AI formats. Scanned art must be 600 DPI or better and all fonts and/or placed images must be included and 'converted to outlines'(or curves) prior to e-mailing.
- Art touch up: for email or general art \$30.00 (G) minimum charge.
- Typesetting: \$10.00 (G) minimum charge.

Orders

- Acknowledgement: we send via fax or email. Please advise your email address when placing imprinted orders.
- Changes to order and/or artwork: submit by email or fax. If work or services are already performed on the order, additional costs may incur.
- Cancelled orders: submit by email or fax after verbal confirmation with factory. \$30.00 (G), plus any production charges incurred up to that time.
- Unimprinted items: Billed at End Quantity Pricing.

Special Services

- Rush service: available on most items. Contact factory.
- Gift wrapping: customer provides paper, \$3.00 (G) per piece.
- Card/message insertion: \$0.25 (G) per piece. Customer provide inserts.

Samples & Proofs

- E proofs: Free for the first fax or e-mail proof, further correction will be billed at \$20.00 (G) for each proof revision.
- Blank/Random samples: Billed at End Quantity Pricing.
- Pre-production samples: Billed at individual item cost, plus set up charges and freight costs.

Shipping FOB point: Los Angeles, CA

- Drop shipments (domestic): \$4.00 (G) per location, Crystal: \$10.00 (G) plus all freight costs.
- Address correction: \$15.00 (G)
- Foreign shipments: \$25.00 (G) document charge.
- Post-office shipments: \$25.00 (G) service charge.
- Mailers: flat \$1.00 (G). Pre-packed \$3.00 (G).
- Weights shown in catalog are approximate.
- Tomax can only guarantee a shipping date of when merchandise leaves our warehouse. We are not financially responsible for consequences resulting from freight carrier delays, errors or failures.

Invoicing and Terms

- Net 30 days for credit pre-approved distributors only.
- There will be a \$25.00 (G) service charge for returned check.
- Past due invoices : 1.5% monthly interest charge will accrue on all past due invoices.

Sales Tax for shipments delivered in CA

- On orders with California shipping destinations, the distributor's California resale number is required to avoid sales tax.

Returns

- Must receive prior authorization from the factory, and request must be submitted within 30 days of receipt of merchandise.
- Restocking fee: 15% on unimprinted merchandise.
- Imprinted items and all USB items: Not returnable.

Trademark Notice

Designs and trademarks herein are for the sole purpose of displaying our imprint capabilities. They are not intended to represent endorsements by the individual companies, nor are they for sale.



Screen/Pad Printing

- Set-up: \$55.00 (G) per color/position/item
- Running Charge: \$0.40 (G) each piece. Please refer to the imprint information on the bottom of each product page
- No repeat set up charge.
- Copy Change: \$25.00 (G) per color/position. Applies only to text or taglines which accompany a logo
- Personalizations: Set up and re-order charge, \$25.00(G). Running charge, \$4.00 (G) each



Full Color Imprint

Full Color / 4 Color process:

- Set-up charge: \$100.00 (G) per logo
- Repeat Set-up charge: \$50.00 (G) per logo
- Run charge: \$1.00 (G) per pc/side



Laser Engraving

- Set-up: \$55.00 (G) per position/item
- Running Charge: \$0.75 (G) per piece (for up to five lines of copy OR a logo plus two lines of copy)
- No Repeat set up charge: Additional running charges on re-orders Do apply
- Personalization: Set up charge \$25.00 (G) (same with re-order). Running charge \$2.00 (G) each (up to 2 lines). Additional lines \$1.00 (G) each



Sand Blasting

- Set-up: \$55.00 (G) per position/item
- Second position running charge: \$7.00 (G) each piece
- Repeat/Release charge: \$25.00 (G) per item
- Copy change charge: \$25.00 (G) per item
- Personalization charge: \$5.00 (G) each piece (up to 2 lines)
- Color-fill charge: \$7.00 (G) per color/location/item
- Returned award adding name/copy set up charge: \$25.00 (G)

